

Every student will have to initially discover for him-/ herself an existing building / infrastructure / urban situation in Miami that triggers his imagination to alter, transform or mutate it into something new. No matter of what size or age, in the process of choosing a specific place of action, each will have to develop an immediate spatial, programmatic and compositional strategy for the structure's future. Metamorphosing from the real into the surreal, on an evolutionary basis we will attempt to envision another Miami full of possible architectures and magical surprises, fluctuating between issues of bizarre change and radical continuity. However, with all this optimism at hand, each initial concept will be rigorously tested in its utopian

potential throughout the semester as it faces the more pragmatic—structural, constructive and thermodynamical—realities inherent to the discipline. Large-scale models and visual montages will be important instruments to achieve the desired transformations which in a meaningful and intelligent way should contribute to their urban surroundings.

STUDIO SAUTER VON MOOS  
University of Miami, School of Architecture  
Upper-Level Design Studio, Fall 2018

19. July 1964 :

Beuys empfiehlt Erhöhung der Berliner Mauer um 5 cm  
(bessere Proportion!)

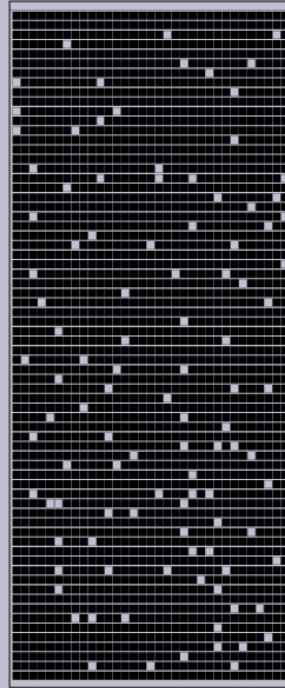
*"Beuys recommends raising the height of the Berlin Wall by 5 cm (better proportion!)"*



Miami Variations

Ricardo Bofill  
La Fabrica  
Barcelona, 1975-Present

# [ H O U S I N G ] DESTRUCTION



FALL 2018

15 Weeks

Germane Barnes

---

**Course Description:**

There is a global housing shortage, specifically an affordable housing shortage. This course investigates failed social housing projects across the globe to discover their source[s] of failure. It will merge architecture, videography, and community identity to create new narratives that explore the past and speculate the future. Students are to be as experimental as possible, using a wide variety of resources provided by the University and within Miami. As affordable housing continues to be a polarizing topic of conversation, this studio will speculate alternative solutions to the research precedents.

**Project Description:**

[Housing] Destruction requests that students utilize diverse research methods to interrogate a specific housing development. At the conclusion of the research phase, students will select a housing project and propose successful future scenarios. The course will utilize different methods of representation not limited to digital drawing, film, analog, writing, photography, digital fabrication, or any combination of the aforementioned. More extensively, the course will challenge students to think critically about how social paradigms influence the built environment.



## UM/SOA Design/Build Program, Fall 2018

Jim Adamson: Billy E. Miller Design Build Critic

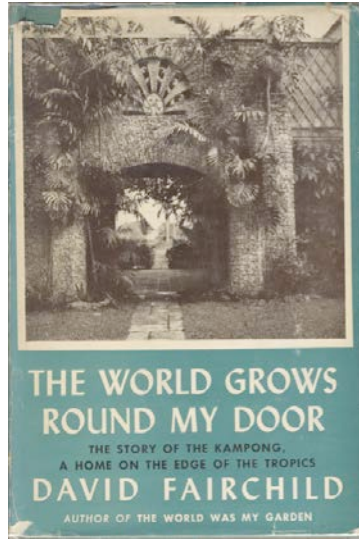
Rocco Ceo: Professor of Architecture

*Project 7: Empower Farms mobile chicken coop, 2016*



## UM/SOA Design/Build Program, Fall 2018

### Project 10: Kampong Potting Pavilion







# KATYE KLINIK

## *Neighborhood Clinics In Haiti*

*"It is with this surety that we must stand with Haiti, a country whose spirit and people will never be broken, and work in solidarity toward the future the Haitian people deserve." — Paul Farmer, Haiti After the Earthquake*

A critical aspect of prosperous modern civilizations is access to quality, affordable healthcare. In Haiti, healthcare is often fragmented, disorganized, or absent entirely, especially in smaller towns and rural areas. Abject poverty plagues the nation and lack of consistent preventative care and immunizations leave Haitians vulnerable to preventable airborne illnesses and infectious diseases. Much work must be done.

This studio will focus on the design of a clinic for one of three small towns in the Arcahaie region of Haiti. The design of each clinic should be accompanied by a small, but meaningful public space, collectively they will serve as catalysts for the greater good of the region as symbols of community and hope.

Instruction will focus on local building practices, low impact development, sustainability, traditional urban design and interpreting folkloric tradition.

*This class will be taught by Prof. Steven Fett, AIA, in collaboration with Jeff Farmer from the University of Miami's Institute for Advanced Study of the Americas.*

Integrative learning, bridging academia and profession . . .



11<sup>th</sup> Street Bridge Park Competition, Washington DC | OMA & Olin

INTERNSHIP + RESEARCH + NCARB hrs.  
9 credit upper-level studio + research seminar

## PAIR Professional Advancement Internship + Research

A 9 credit upper-level studio + research seminar forming a bridge between academic research and professional practice. This opportunity will challenge mature students to integrate what they have learned within the classroom and gain experience working with a professional office. Students should expect PAIR to occupy a 40 hour work week. 50% of the time, 20 paid hrs. weekly, will be spent on prescribed office projects and 50% of the time, 20 non-paid hrs. weekly, will be spent advancing a research topic. At least once a week students will meet on campus for a group seminar, professional reflection, advancement of individual research and participation in the evening lecture series. This is a competitive placement with limited seats.

### requirements

Open to B.Arch & M.Arch  
Min. 3.3 GPA  
Portfolio (pdf format)  
Resume  
Letter of Intent

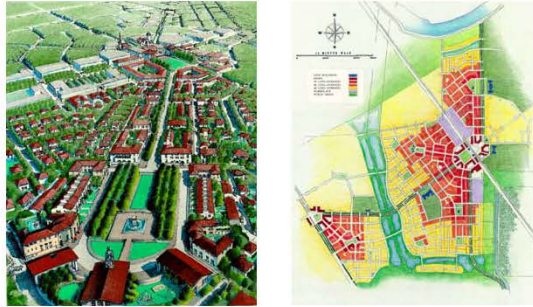
### questions

SoA Courtyard 4.25 @ 1:15 pm

### coordinator

Wyn Bradley, wbradley@miami.edu





### **ARC 601 Introduction to Urban Design: Transit-Oriented Development**

Fall 2018

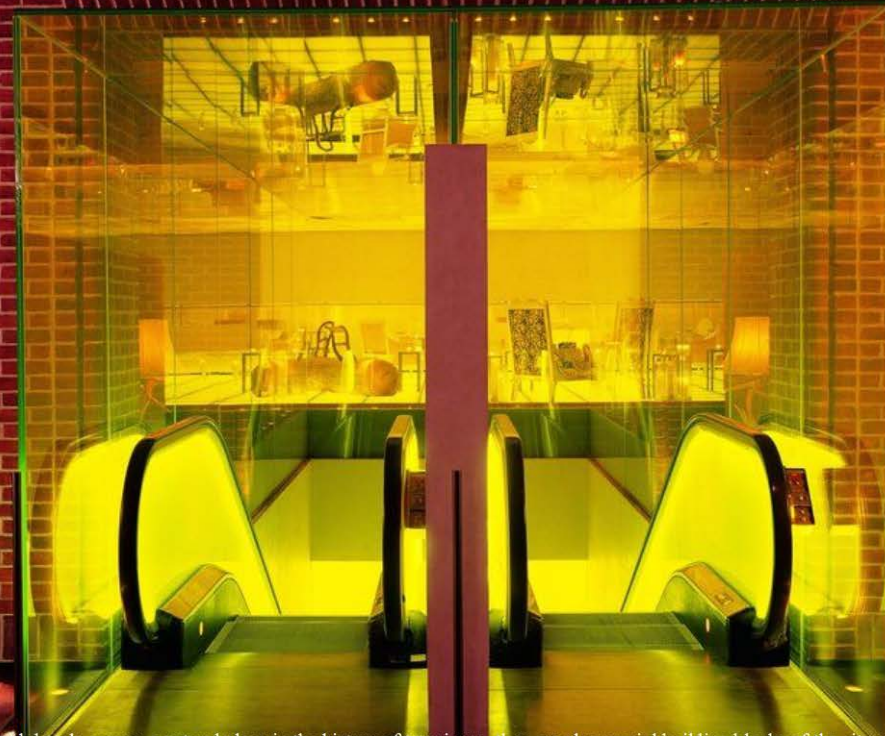
Professor Elizabeth Plater-Zyberk

This studio will introduce students to the principles, processes and practice of urban design through their design of a Transit-Oriented Development (TOD). The semester will engage three projects in sequence: a study of precedents to establish the program; the design of residential and commercial building, street, and block types; and the master plan aggregating all the components into a place of convenience, character, and beauty.

The site will be an undeveloped area of approximately 200 acres along a commuter rail line. Guided by the Lexicon of New Urbanism, students will learn about public transportation types, the Transect, neighborhood structure, place-making, designs that invite pedestrian use of public space, and recent developments in biophilic design, Smart Cities, Ag Urbanism, and Lean Urbanism.

Two special experiences will be part of this semester: The National Charrette Institute (NCI) Seminar, a three-day lesson in organizing and managing public design processes; and a three-day field trip to the Florida Panhandle to visit the region of the most acclaimed new neighborhoods in the U.S.

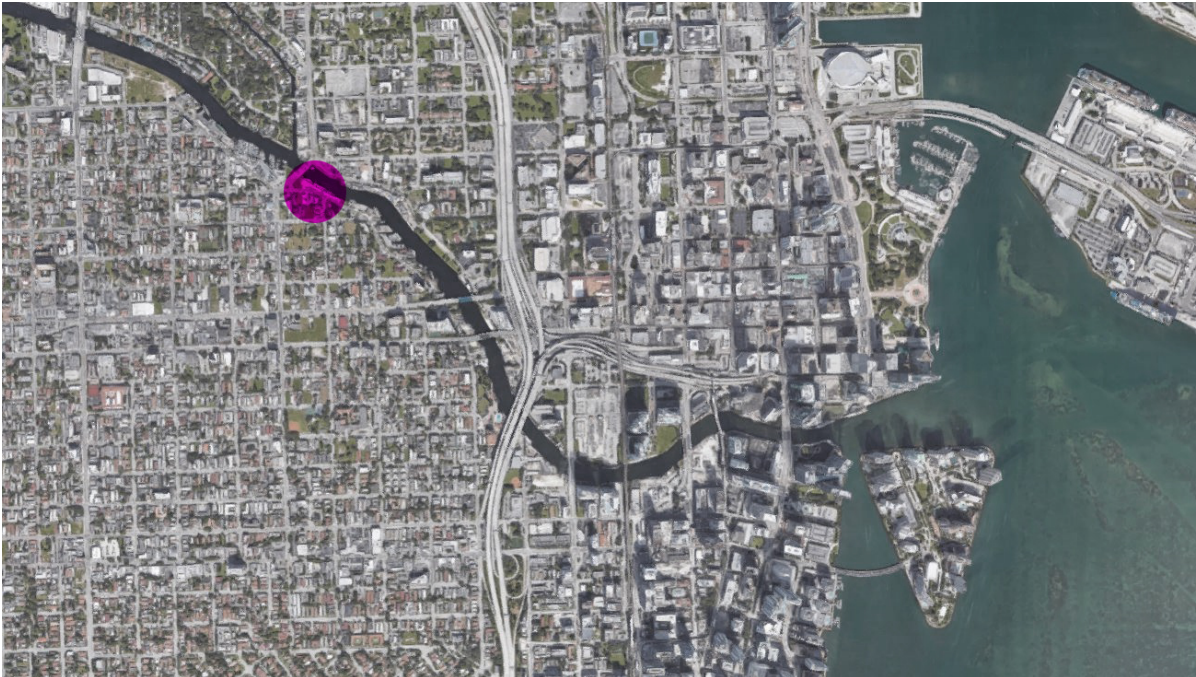
# URBAN HOTEL STUDIO



Although hotels occupy a natural place in the history of transience, they are also crucial building blocks of the city and of urban culture. As curator Donald Albrecht has noted, hotels provide "a critical node in the network of the city and the circulatory system between cities." For some, the hotel itself is a metaphor of urban life. As a building type, hotels span the public and private realms: they mix quasi-civic spaces of social interaction with residential/domestic areas. They include overlapping programs and amenities; they are terrains of culture and consumerism.

The central focus of the Urban Hotel Studio will be the design of a new hotel in the urban core of Miami: the Bridge Hotel. The site, adjacent to a bascule bridge along the Miami River, places the project at the intersection of maritime industrial uses and new residential and commercial activity. In the development of the project, the studio will explore the hotel from historical and contemporary perspectives. The rich program of the hotel will be indulged in coordination with uses that reinforce the economy and character of the existing neighborhood.

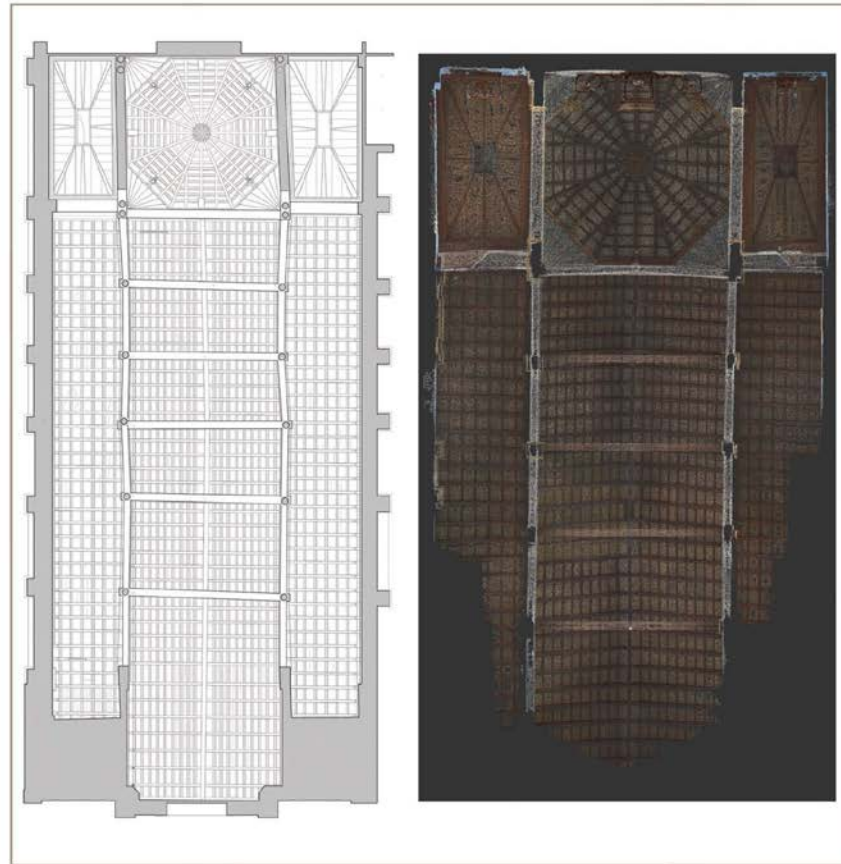








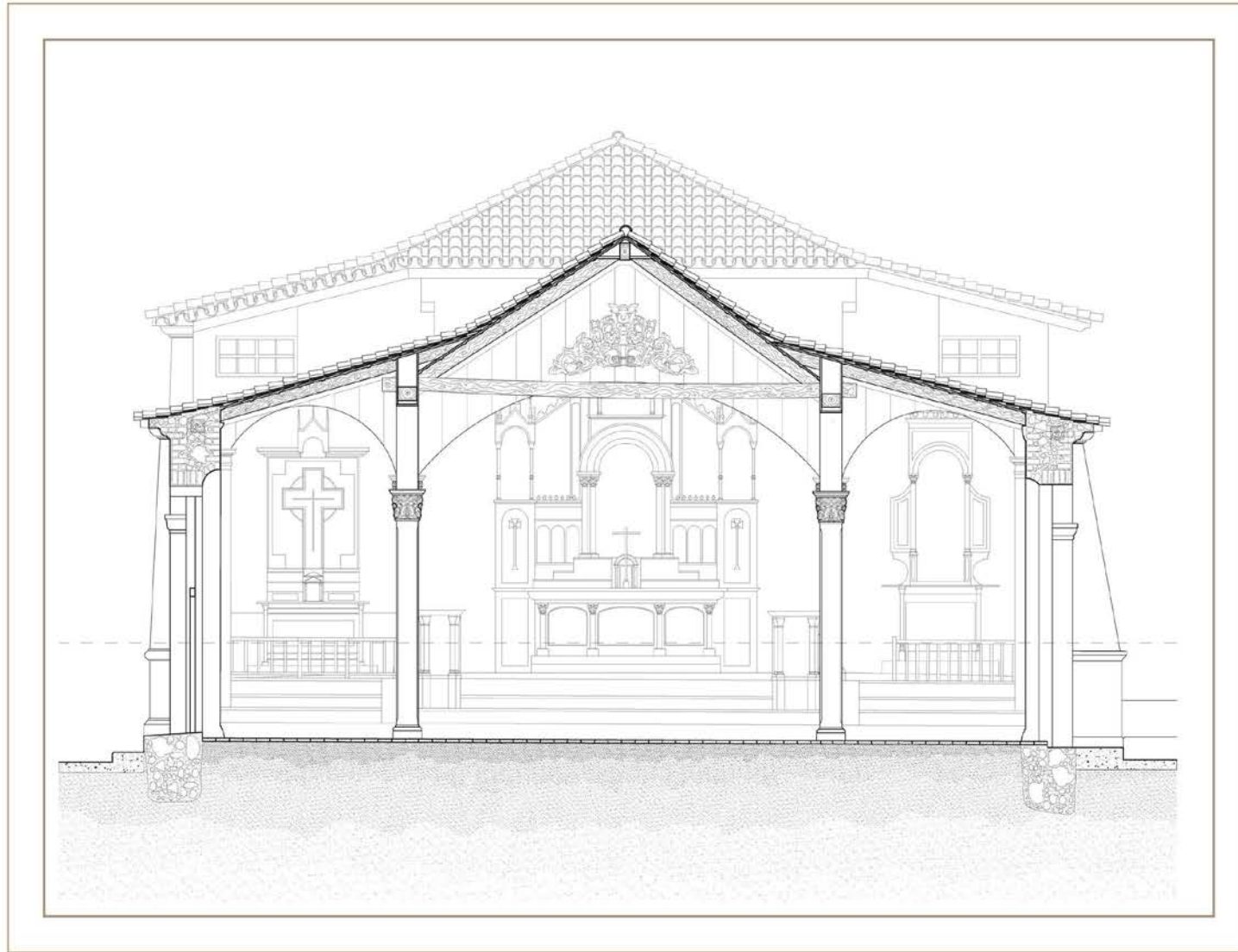
Preservation Studio  
The Synagogues of the Caribbean  
Arc 407-408, 509-510, 609  
Fall 2018  
Professor Jorge L. Hernandez



Ceiling of Santa Lucia (1701) Hand drawing.

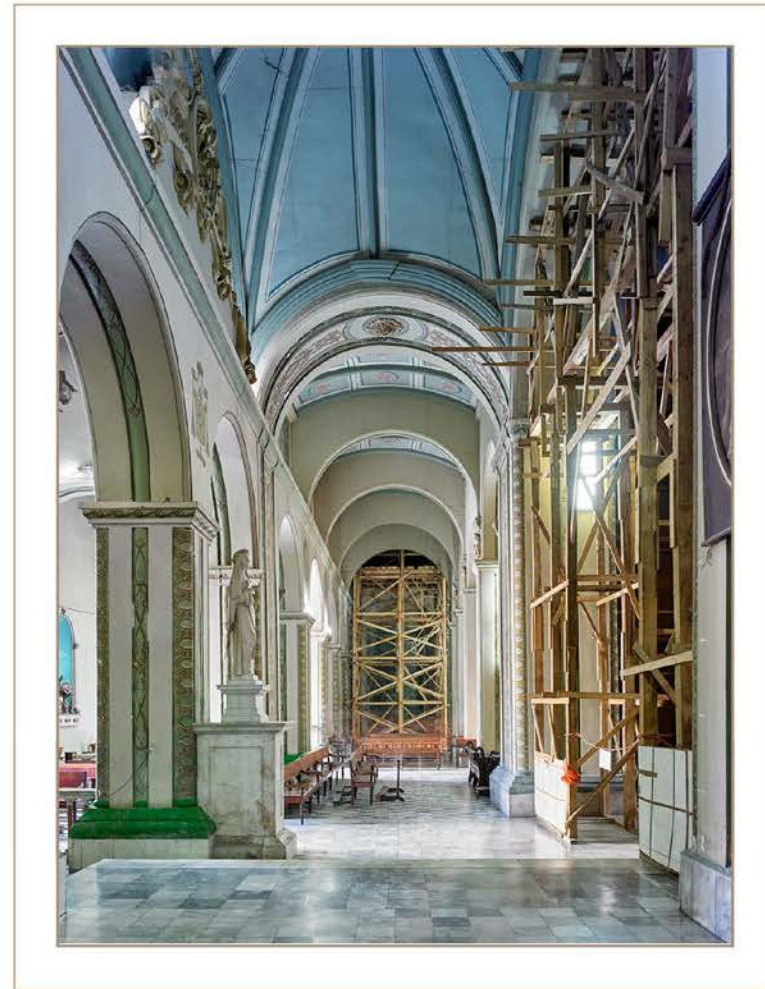
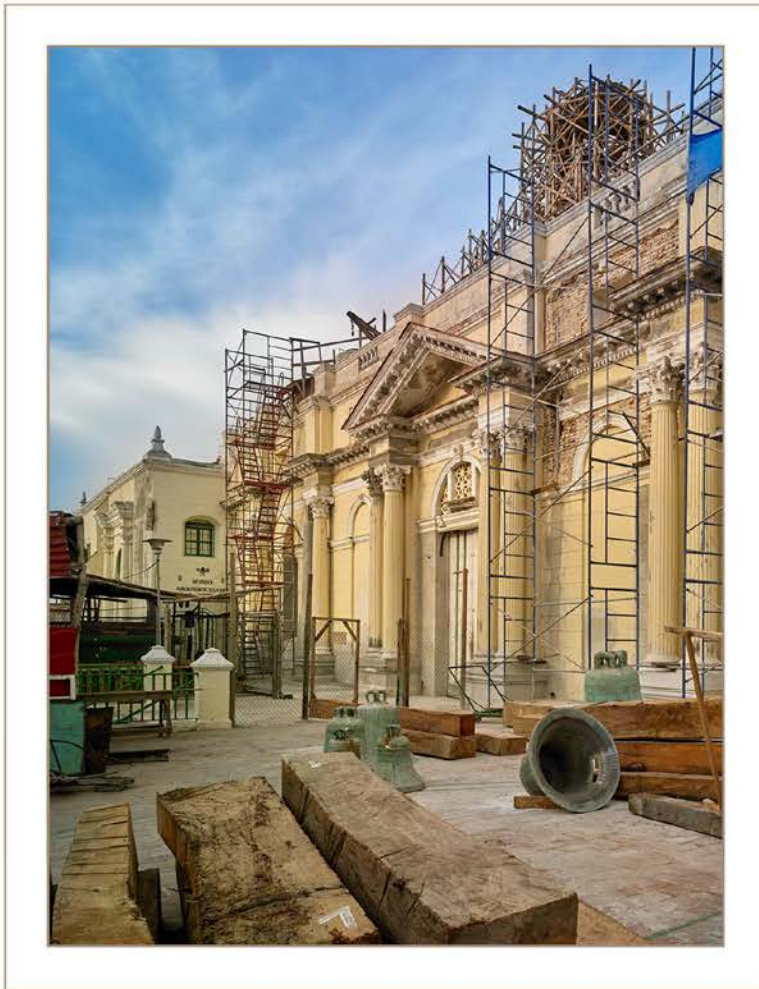
Ceiling of Santa Lucia (1701) Point Cloud Image.

This studio will travel to Curacao to document, in collaboration with the Center for Computational Science, the Synagogue as part of an initiative to document synagogues of the Caribbean. In depth documentation will precede a preservation/restoration initiative that includes a substantial addition programmed to meet the social and educational needs of the community. Students will develop the project program as a result of social exchange with members of the community and design additions to the historic Synagogue towards this end. The school will provide support for travel costs. A meeting of studio members is required prior to end of semester.



SANTIAGO DE CUBA- CHURCHES  
CROSS SECTION OF SANTA LUCIA





SANTIAGO DE CUBA - CHURCHES  
 LEFT: CATEDRAL. RIGHT: CATERDRAI WEST AISLE.

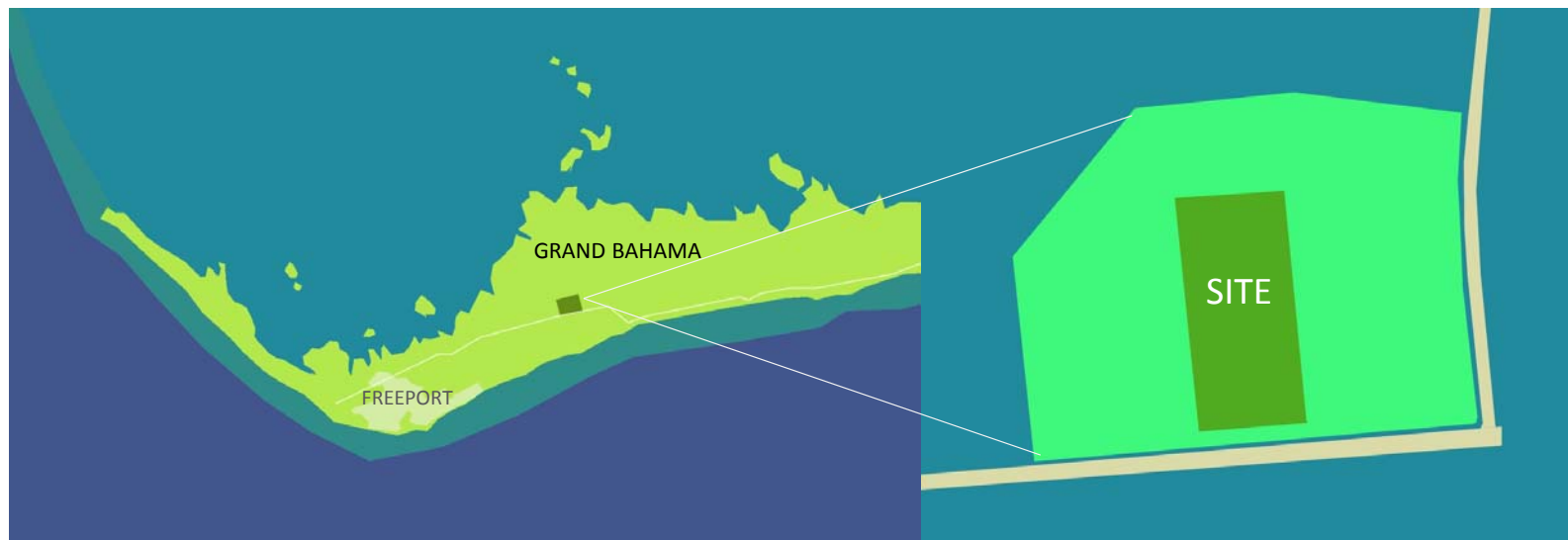
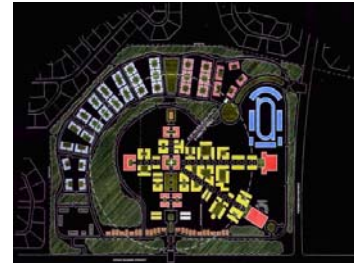
UNIVERSITY OF MIAMI  
**STUDIO**  
U of Bahamas Masterplan  
2018

AIA / FOUNDING DESIGN PARTNER TO DESIGN

**GIVEN**  
**THE**



*A master plan study was completed for the University of the Bahamas in 2013. The results show that the number of students is expected to grow by 50% in the next five years. With this explosive growth comes the urgent need for a comprehensive campus master plan design. Fifty acres of land were given to the university for campus expansion, with a total area of 220 acres planned for the future. The site for the new campus is east of Nassau along the Grand Bahama Highway. The distance from Nassau and the lack of current infrastructure will require more comprehensive planning ideas beyond the university buildings themselves.*



#### *Studio Sequence:*

*The studio seeks to produce visionary proposals to influence the design of the UB North Campus Masterplan. The designs will be a balance of community making, response to cultural identity, pedagogical innovation, and technological vision. Special consideration will be given to the integration of the natural environment into the campus plan. Designs will also be focused on resistance to natural disaster and future looking sustainable concepts.*

- 1) *Design of a campus visitor's center (two weeks)*
- 2) *Research on the culture of the university and country*
- 3) *Design of diagrammatic planning concepts*
- 4) *Visit to UB and interviews of student and faculty members*
- 5) *Design of comprehensive master plan*
- 6) *Focus on the design of an individual building typology*





Miami (open July 2018)

