

“L’ESPACE INDICIBLE”

(Ineffable Space)

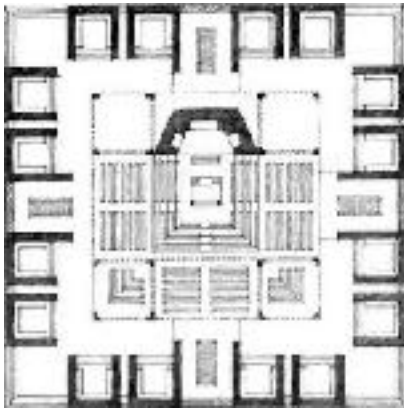
“When we are riveted by our senses; we are ravished in our minds....”

Le Corbusier

UM All Faith Campus

ARC407-510-609/Upper-Level Studio/ Fall 2023

Prof. J. Calvo



Louis Kahn's Hurva Synagogue/Unbuilt

Project Description:

From the beginning of time humanity has sought to find the meaning of life through nature, astrology, science, human and supernatural revelations. At the UM we continue this life long search via our very own campus ministries for all major world religions. Our goal for this studio is to create an urban center/district for all faiths. We will create a master plan that will incorporate a communal learning center/ library, contemplative gardens and areas for individual (or combined) worship/ meditation. Ultimately, this collection of buildings and ineffable spaces will become the new identity of the campus ministries and spiritual home for all those seeking to engage with the transcendent.

Religious affiliation is not required

**School of Architecture
ARC 407-510, 607-609, Design VII-X,
MW 1:30-5:00, Fall 2023
Professor Ceo**

Designed by Nature



Kitching Creek, Image by: Bruce Bain

Projects for Jonathan Dickinson State Park

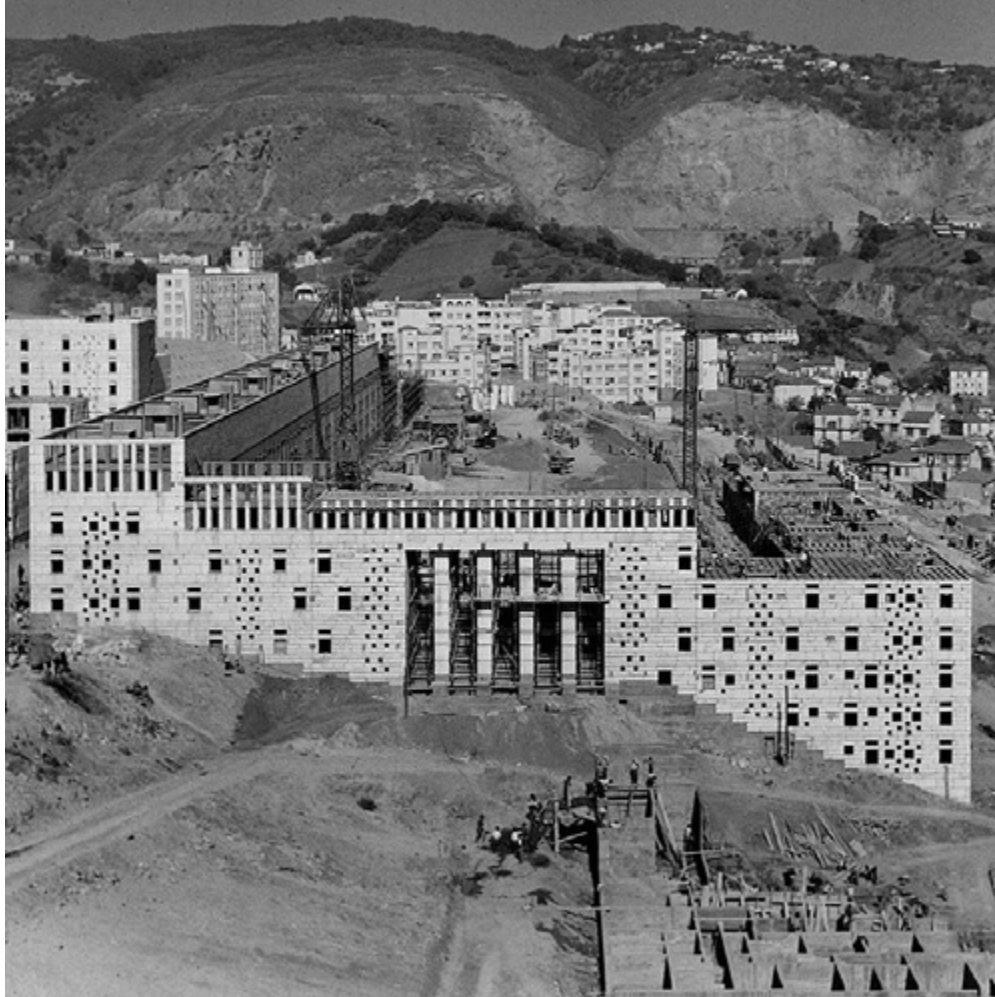
Course Description:

A site designed by nature has felt the often-heavy hand of man in various ways throughout its history. From its early occupation by the Hobe and Jeaga Indians who built mounds of shell rock as burial sites, kitchen middens and signaling platforms to warn of approaching ships. Wrecked European colonists and their slaves occupied the site temporarily until driven north by the indigenous community. Pioneers, most notably Trapper Nelson who homesteaded the land, created a zoo, and later sold the land to speculators and the US government who used the site as a military training site for the Signal Corps during World War II. Finally, the most dramatic infrastructure transformations occurred with the construction of the FEC railroad and Old US1 highway bisecting the park and introducing 'The Machine in the Garden' to borrow a phrase from Leo Marx who wrote a book of the same title.

Throughout it all Jonathan Dickinson State Park (c.1950) is a landscape of uncommon beauty and attempts to balance the abandoned but present relics of the past with a new program of conservation of its 16 ecological communities in 11,500 acres of land.

The studio will explore how time has shaped this landscape through engaging in two projects for the State Park: A replacement Observation Platform for Hobe Mountain, and a cabin for visiting artists/naturalists studying the horticultural and endemic species the park is known for. The first site is given the last is chosen by you based on your drawn analysis of the site.

The studio will look at the notion of paradox in nature and architecture exploring how balance is achieved through engagement of two competing interests: access and growth and preservation and education. The two contrasting projects reveal the site to the visitor underscoring the site's attributes and challenges.



Climat de France » Algeria » Fernand Pouillon

FINDING AFFORDABILITY IN HOUSING

UPPER-LEVEL STUDIO / FALL 2023: PROFESSOR STEVEN FETT

with the Vagabond Group (AVRA JAIN / AMANDA BONVECCHIO / SUE ZHANG)

At an alarming rate, housing in America is becoming unaffordable. Large cities are often the most affected by the high cost of housing. According to a recent report conducted by CBS News, Miami has the nation's fourth highest percentage of "House Poor" residents (nearly 60%), a measure of homeowners who spend more than 30 percent of their income on housing expenses. Architects have a unique opportunity to lead the discussion on how to provide physical solutions to the problem through design and planning efforts.

This semester, with the support of the Vagabond Group, led by Miami-based developer, Avra Jain, we will study past and contemporary solutions to affordable housing and apply innovative strategies, including alternative approaches to building, such as large-scale 3D printing technology, to five real sites in Miami. Additionally, students will develop a broad-based understanding of the building and development industries, including how to price a project and create an affordable construction budget. We are seeking highly motivated and hard-working students to join us in the studio.

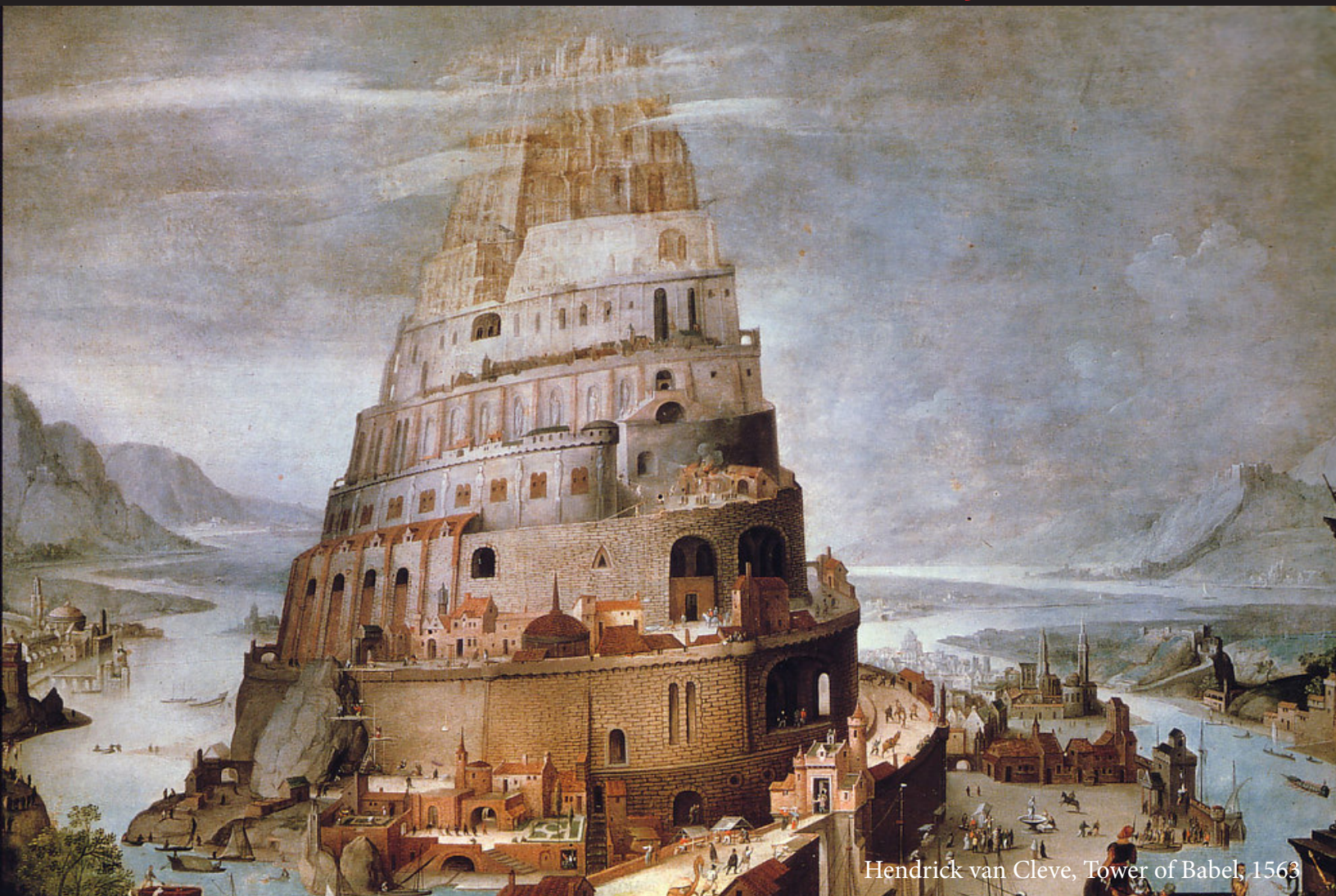
Design for Heroes

Fall 2023

Upper Level Studio

ARC407-510-609

Instructor: Eric Firley



Hendrick van Cleve, Tower of Babel, 1563

become the star designer in your favorite
artist's world

Explore the Design of a Bariatric Clinic via Pre-Design Research activities that will lead to Evidence-Based Design Solutions.

Create Healing Environments

- Promote patient dignity
- Provoke physical and psychological reactions
- Integrate daylight and views
- Promote health and education
- Create a sense of community
- Provide life changing experiences



ARC 407-510-609
UPPER-LEVEL STUDIO

EVIDENCE-BASED DESIGN STUDIO
BARIATRIC CLINIC

Deborah Franqui, AIA, PhD, NCARB
Coord. Healthcare Design Program, SoA
Sr. Associate, Healthcare Research Leader,
Bermello, Ajamil & Partners

Luis Sousa, RA, NCARB, RID
Partner, Vice-President of Healthcare,
Bermello, Ajamil & Partners



SILICA CITY: A new urban model in Guyana

Fall 2023 6 credits ARC 407-510-609 MW 1:30-6:00PM Prof. Jose A. Gelabert-Navia

A consortium led by ExxonMobil discovered the first major oil deposits in May 2015 off Guyana, one of the poorest countries in South America despite its large reserves of gold, diamond, and bauxite. This South American country of 791,000 people is poised to become the world's fourth-largest offshore oil producer, placing it ahead of Qatar, the United States, Mexico, and Norway. The oil boom will generate billions of dollars for this largely impoverished nation.

The current capital city, Georgetown, is below flood level and will ultimately be forced to be abandoned. In its place, Guyana envisions a new capital, **Silica City** as an innovative resilient city of the 21st Century. Silica City will house high-tech industries and will provide employment for the inhabitants of Guyana in a diversified economy built on resilient and sustainable development. Silica City will be a model for national growth based on innovation setting a new standard of development, driving innovation, a beacon for investment, and a pathway to smart and sustainable development. The University of Miami School of Architecture will be working with the Cooperative Republic of Guyana and the Guyana Innovation Group to analyze the existing Zoning Plan and then to prepare Concept and Detailed Masterplans to create an **Innovation Center** for Silica City. The course will examine issues of urban design and resiliency and will be supported by an international team of experts that will be advising the Design Studio

GROUND ZERO: THE ANCIENT IN MODERN MIAMI

Preservation Studio and Classical Studio:
Arc 407-510 and 609
Fall 2023
Professor Jorge L. Hernandez



One of Theodor de Bry's engravings possibly based on le Moynes drawings, depicting Athore, son of the Timucuan king Saturiwa, showing Laudonnière the monument placed by Ribault

This studio involves the analysis, mapping, interpretation, and design of 2000 year-old First Nation settlement patterns at the foundational spot of the modern City of Miami. Nearly 25 years ago the Miami Circle was unearthed with much fanfare and controversy and after years of debate, the site was secured, the resource was measured and buried for its protection. Fifteen years ago, a group of circular ruins were found on the north shore of the river and worked into a large scale development. More recently on the south side, a new site has been discovered. The prevailing pattern of these resources would lead us to think that there was a populated settlement on Biscayne Bay which may be, but fragments of the earliest markings of human habitation for this area. The studio will explore ways of recuperating the presence, access and awareness of this antique site in a city obsessed with youth. We will study interpretive centers, museums and other manner of marking the Earth with multiple layers of meaning.

There will be a number of guest lecturers that will visit the Studio and provide us with professional archeological, historical and legal guidance.

OTIIMALAB

FALL 2023

Upper Level Studio

M/F:

1:30PM- 5:00PM

Faculty

Sophie Juneau

Veruska Vasconez

David McMillan

USoA / Upper Level Studio Fall 2023

aquatic dis/ordinary

“We need to find ways of starting from the richness that neuro-/bio-diversity brings, from uniqueness and difference and not from bodily norms and averages. (...)”



Access to the water and the water’s edge has always defined South Florida’s imaginary and pull on both locals and newcomers. This studio will look at designing access to the ocean for all bodies – both normative and non-normative. Two structures that facilitate activities on and along the water (a floating platform, and a cruise ship) will be re-designed to account for a larger, more rich and varied approach to embodiment. Both the floating platform and cruise ship have working models within which the re-design will take place. Starting from these existing systems as constraints, it follows from this that ideas of “adaptation”, “retrofit” and “repair” will be operational in working through the design prompts of the semester.

As noted by design scholar and disability activist Jos Boys “We need to find ways of starting from the richness that neuro-/bio-diversity brings, from uniqueness and difference and not from bodily norms and averages. (...) By starting from difference – from mis-fitting, unruly and non-conforming bodies – dis/ability becomes a creative generator, producing new, previously unnoticed ways into designing”.



GO FRIDAY.

ECOSTEEL



Outpost Studio

'When the Gay Nineties [1890s] began, the common word for forests was "inexhaustible." To waste timber was a virtue and not a crime. There would always be plenty of timber...The lumbermen...regarded forest devastation as normal and second growth as a delusion of fools.... And as for sustained yield, no such idea had ever entered their heads.'

Gifford Pinchot (American forester and politician 1865 - 1946)

Outpost Studio will explore the resurgence of wood in architecture with an attentiveness to the morphology of wood. Student driven research will delve into architecture as a conscious act of design linking territory, industrial processing, logistics, tectonics, form, materiality and space. These elements will stand as the alibi to strip away the ambiguity of wood as a commodity *or product* and serve to understand the diversity of wood's architectural building morphology, *a material*: frame, hybrid, mass based and everything after. With the advice of Deleuze and Guattari the first act of the studio is unveiled: *'surrender to the material so we can uncover the specificity of wood architecture.'* Students will return to materiality with an emphasis in engaging the physical-ness of architecture-developing an intimate knowledge of wood.



Net Zero Design + EXP Research Fellowship

Dr. Haleh Moghaddasi, Assoc. AIA, LEED GA
Senior Energy & Sustainability Manager | EXP
EXP U.S. Services Inc. (EXP) Team

Fall 2023
Mondays & Wednesdays
(1:30 - 5:00 PM)

In response to global warming, there is a worldwide effort toward climate change mitigation and achieving net zero (NZ). The University of Miami is committed to becoming carbon neutral by 2050 while having a 40% carbon reduction by 2030. To be part of this commitment, this course invites motivated students to conduct NZ practices across power systems, buildings, and transportation (PBT) sectors at the University of Miami.

Professionals from EXP U.S. Services Inc. (EXP) will provide workshop series that involve students in real-time projects that can be categorized into sustainability & resilience planning, energy-efficient buildings & LEED projects, transportation & EV charging stations, and decarbonizations & clean energy transitions.

EXP Research Fellowship: EXP is a full service architectural and engineering firm with 4,000 professionals across North America. EXP has provided sustainability, resiliency, and energy management planning services for higher education campuses in Florida, including Valencia College, the University of Central Florida, the University of Florida, and corporate campuses across the state.

EXP will define projects, provide mentorships & review sessions, and Fellowships to students/ teams that deliver the best final outcomes. ASHRAE Miami Chapter representatives will serve as reviewers.

EXP'S ROADMAP TO NET ZERO



SERVICES + SUPPORT ON THE PATH TO NET ZERO



energy efficiency



on-site renewable



clean power + electrification



offsets, off-site renewable



stakeholder engagement



wastewater management



carbon capture



waste to energy

University of Miami School of Architecture

ARC 407, 408, 509, 510, 601, 609
Professor Elizabeth Plater-Zyberk



An Introduction to Urban Design Sustainability, Wellness, and Equity

Urban design is guided by social, economic, and environmental goals.

Social goals include community connectedness, embodied in appealing shared spaces and gathering places that welcome a diversity of people and activities.

Environmental goals include sustainability and resilience, supporting the health of natural resources and systems, and human well-being.

Economic goals include the balancing of benefit and cost, for the community and the implementors, in terms of investment, affordability, operations, and growth in value.

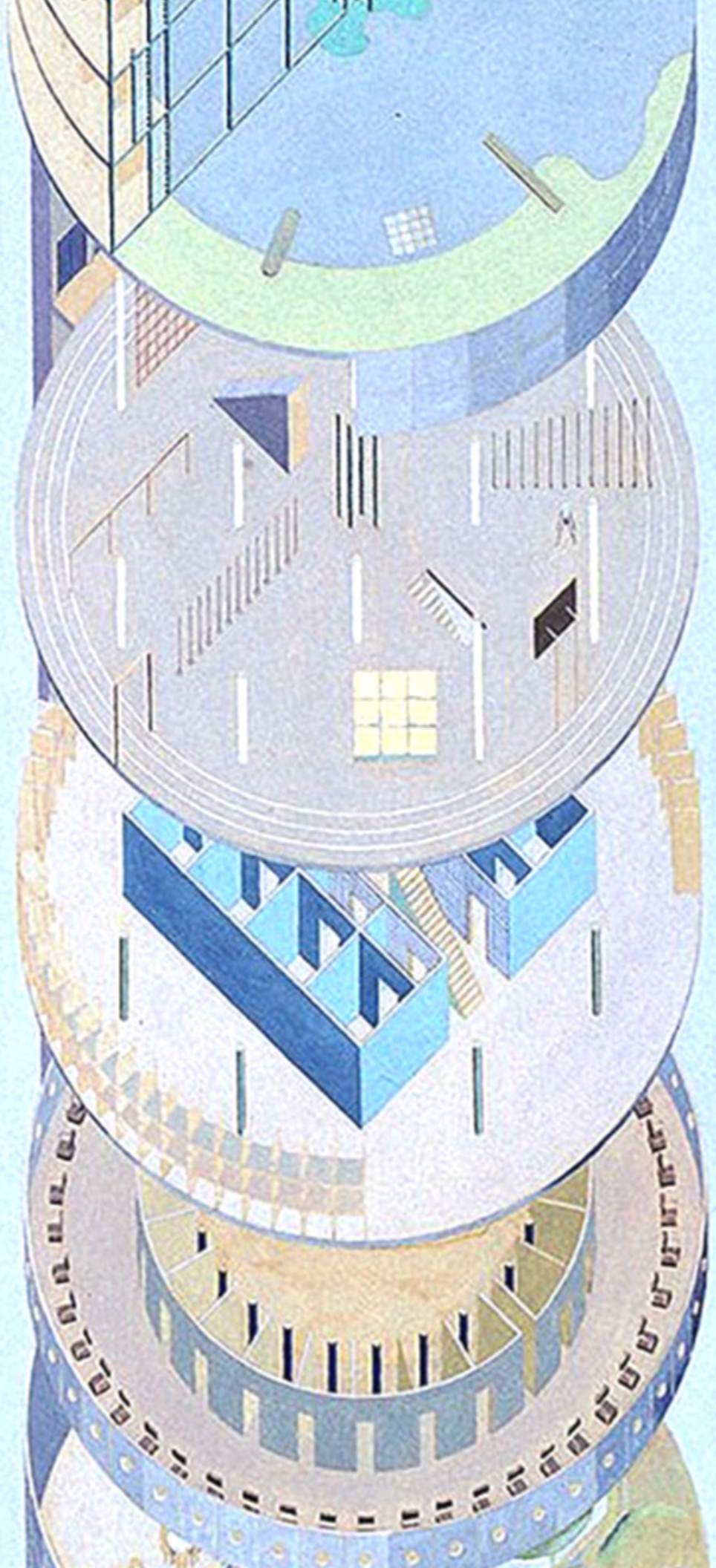
With these goals in mind, students will learn how to design places that encourage pedestrian use of public space, provide a sense of place, promote a sense of community, and are functional, efficient, and beautiful.

Urban design deploys knowledge across disciplines, including planning, architecture, landscape architecture, traffic engineering, sociology, real estate development and finance. All of these will inform the studio, guided by the methods and techniques of the New Urbanism.

Hotels are engines of global transience, but they are also building blocks of the city, and of urban culture. They are connected to our public and private lives, drive our imagination, and offer glimpses of novel lifestyles.

The 2023 Hotel Futures Design Studio, set in NYC, offers a forum for the investigation of hotel architecture, emphasizing reciprocity between research and design, and between provocative futures and real-world challenges.

Image: Zoe Zenghelis, Elia Zenghelis. Hotel Sphinx (The Head) Project, New York, New York (Axonometric). 1975
MOMA



NATIVIDAD SOTO

ARC 407-510-609 Upper-level Studio
Fall 2023



The Salvation Army Miami Area Command has a robust social services program serving many needs in our community. The Salvation Army is establishing a new Miami North Corps that will serve the northern areas of Miami Dade County. The property is located in the City of Miami Gardens - with an estimated 30,485 households, and a population of 110,000, predominantly African American and Hispanic people. The site's existing improvements include a building that formerly housed a radio station and more recently a beauty products manufacturing facility. There is a desire to repurpose as much of the existing building as possible and expand where necessary to meet the new programming needs. The program for the site includes a new sanctuary, music instruction and practice areas, after-school care, office and support spaces. In addition to the social services work, the Salvation Army is well known for their band and music program. This facility will provide music instruction to the community and will serve as a place of worship for the parishioners.



UNIVERSITY OF MIAMI
School of Architecture

RESILIENT LANDSCAPES

FUNDAMENTALS OF LANDSCAPE ARCHITECTURE

This studio is intended for students with advanced architectural studies and a keen interest in outdoor environments, public realm, and its interaction with architecture. In this studio, students will learn the fundamentals of landscape architecture and apply their knowledge and skills on various sites on the University of Miami campus.

Integrating nature into the built environment is a priority in today's world. As designers, we must develop innovative and bold solutions that respond to the unique conditions of each site. A successful landscape design includes resilience: the ability to adapt to climate change while restoring biodiversity and improving human experience.

The students will have the unique opportunity to learn from the design firm that recently completed UM's Lakeside Village, ArquitectonicaGEO, a Miami-based award-winning design firm specializing in landscape architecture, planning, and urban design.

ArquitectonicaGEO has had the opportunity in the last decade to develop the unique expertise in the design of resilient outdoor environments for a wide range of project typologies and scales. Some other notable projects that ArquitectonicaGEO has recently completed locally and that students may be familiar with include: Perez Art Museum Miami; Canopy Park Miami Beach; Brickell City Centre; and the PortMiami Tunnel.

Join our Studio and discover ways to see projects in a more holistic way where resilient design strategies improve the natural and built environments, enhance the human experience, and create more resilient places. Students will apply skills and knowledge acquired on local sites with different condition.

FACULTY

LAURINDA SPEAR

FAIA, PLA, LEED AP, IIDA

FOUNDING PRINCIPAL

ArquitectonicaGEO

FACULTY ASSISTANTS

ArquitectonicaGEO

Team

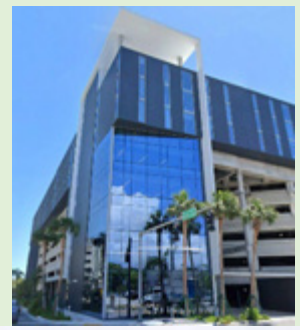
FALL23

SCHEDULE:

in-person

Mondays + Wednesdays

1:30 - 5:00 PM



OFF CAMPUS STUDENT HOUSING

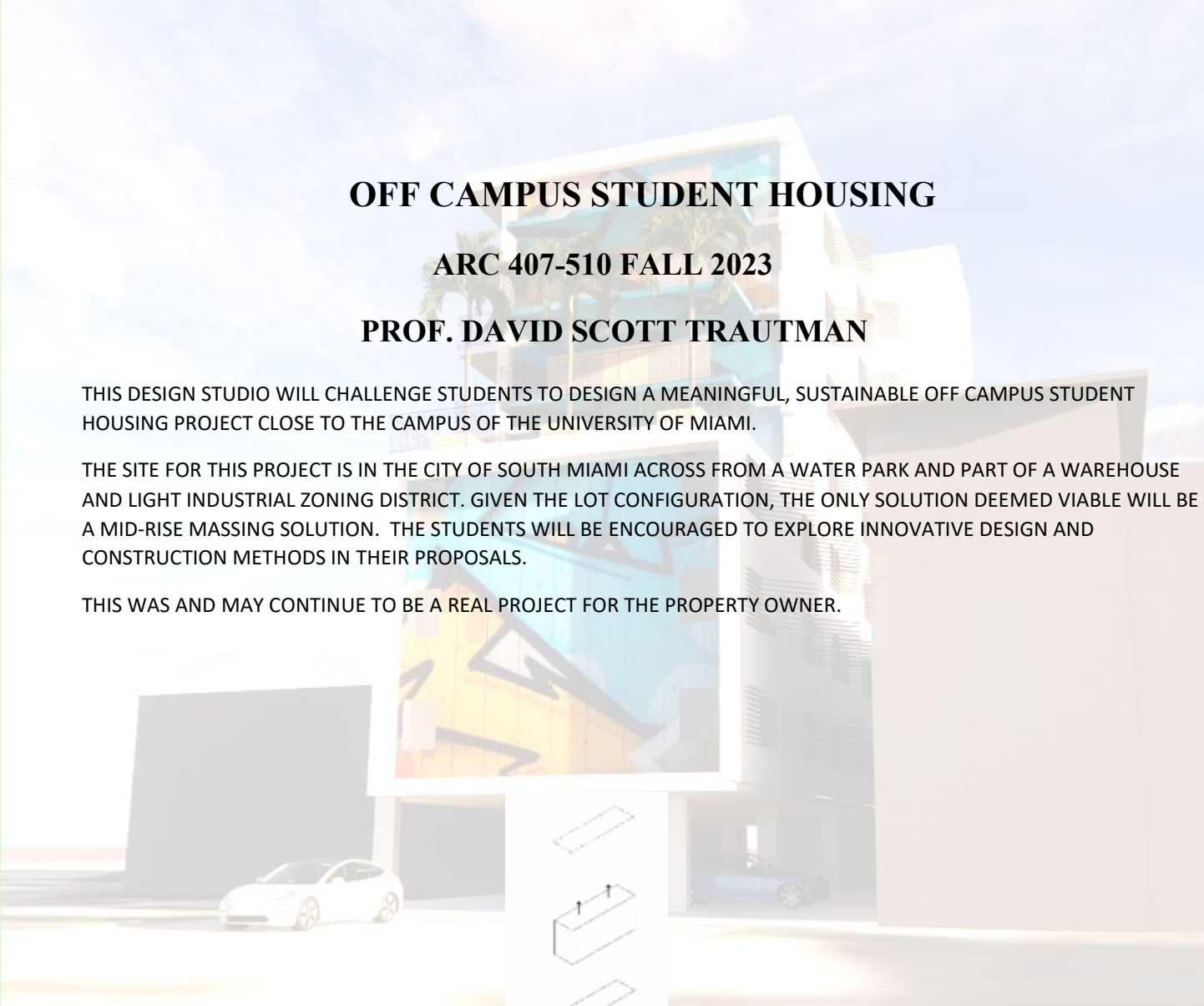
ARC 407-510 FALL 2023

PROF. DAVID SCOTT TRAUTMAN

THIS DESIGN STUDIO WILL CHALLENGE STUDENTS TO DESIGN A MEANINGFUL, SUSTAINABLE OFF CAMPUS STUDENT HOUSING PROJECT CLOSE TO THE CAMPUS OF THE UNIVERSITY OF MIAMI.

THE SITE FOR THIS PROJECT IS IN THE CITY OF SOUTH MIAMI ACROSS FROM A WATER PARK AND PART OF A WAREHOUSE AND LIGHT INDUSTRIAL ZONING DISTRICT. GIVEN THE LOT CONFIGURATION, THE ONLY SOLUTION DEEMED VIABLE WILL BE A MID-RISE MASSING SOLUTION. THE STUDENTS WILL BE ENCOURAGED TO EXPLORE INNOVATIVE DESIGN AND CONSTRUCTION METHODS IN THEIR PROPOSALS.

THIS WAS AND MAY CONTINUE TO BE A REAL PROJECT FOR THE PROPERTY OWNER.



1923 / 2023

VERS UNE (CONTEMPORARY) ARCHITECTURE



ARCHITECTURE OFFICE

VERS UNE (CONTEMPORARY) ARCHITECTURE 1923–2023 Studio Charlotte von Moos

Le Corbusier's book *Vers une architecture* was published in 1923, precisely one hundred years ago. It instantly became 'the' canonical manifesto of the Modern architectural movement. Based on a series of essays published between 1920 and 1923 in *l'Esprit Nouveau*, the treatise combines chapters driven by a fascination for the modern, technological world with others that, in a more strictly disciplinary, almost timeless way consider issues such as light, volume, or composition. Provocatively juxtaposing

images of diverse provenance, for instance, ocean liners and airplanes with Greek temples or silos, *Vers une architecture* was at once a seminal witness to its time, a critical propaganda tool for Le Corbusier's expanding practice, and in a broader sense appealed to standardize but also poeticize architectural production.

The brief of our studio—one positioned at the intersection of a regular design studio, theory seminar, and book design workshop—will take the centennial of Le Corbusier's groundbreaking publication as a starting point for a profound confrontation with its contents, question their relevance for today's post-pandemic, Anthropocene world of

socio-economic turmoil, and aims to produce an updated manifesto for our time collectively. The resulting pamphlet will form our theoretical framework, i.e., a topical survey of contemporary benchmarks, for designing as a project an architecture office in each student's hometown. Both theoretical and practical parts will integrate experimentation with AI-generated images and texts.

Prof. Charlotte von Moos
6 credit points
Collective Research, Individual Design Work

URBANISM ARCHITECTURE TRANSPORTATION

An exploration of the complex relationship between urban planning, architectural design, and mobility transportation systems. This course will delve into how context and character shape the design of cities, neighborhoods and the buildings that influence their inhabitants' lives. Discussions on urban planning theories, economics, sustainable development practices, and the social, cultural, and environmental impacts of the project. Students will explore how to integrate transportation infrastructure harmoniously with the urban landscape, considering factors such as accessibility, efficiency, aesthetics, and sustainability and how historical and contemporary urban design movements, policy frameworks, and emerging technologies shape the future of urbanism and transportation.

This studio will describe how to observe a problem from the perspective of examining the urban fabric and conditions and then designing solutions. Teams will create the master plans and through individual assignments students will design architectural solutions that fit into the master plan. Mobility and transportation systems will be incorporated within the overall solution. The studio may also include short sketch assignments that explore a particular issue or detail.

The studio equips upper-level students with the knowledge and skills to envision and design cities that promote livability, connectivity, and sustainability while integrating architectural excellence with efficient and inclusive transportation systems.

ZYSCOVICH ARCHITECTS

Zyscovich is a 130+ person integrated urban planning, architecture and interior design firm with offices in New York, Miami, West Palm Beach, Orlando, Tampa, Jacksonville and Colombia that has garnered an international reputation for its creative solutions to significant architectural and urban design work. For 44 years, the firm has strived to create projects with purpose, bringing new life and vibrancy to cityscapes through integrated planning and architecture. The firm is nationally recognized for both innovation and a practical approach to design.