

WYNWOOD STREETSCAPE

ACKNOWLEDGEMENTS

Written by Elsa A. Hiraldo
Spring 2020

In Collaboration With:
University of Miami, School of Architecture, PAIR Program - Professor Wyn Bradley
ArquitectonicaGEO, Ben Hutchens

Special Thanks To: Elfis Hiraldo



CONTENTS

001 INTRODUCTION

History of Wynwood - 01

Neighborhood Identity - 07

002 STREETSCAPE CASE STUDIES

Boulevard - NW 5TH AVENUE - 13

Pedestrian - NW 24TH STREET - 19

Main Street - NW 2ND AVENUE - 25

003 SOLUTIONS

Sustainable Streetscape - 33

Street Landscape - 35

Paving - 37

Water Conservation - 39

Security and Safety - 41

004 CONCLUSION

Next Steps - 43

001 INTRODUCTION

Today, streetscapes play an important role in many cities and neighbourhoods. They are what define the character of a city. **Wynwood** which is a neighborhood located in Miami has become a very tourist zone due to its artistic character. However, the streets lack of providing a space where visitors and locals can feel comfortable and safe while contemplating the art on the street walls. For this reason, my research will focus on providing solutions that will improve the streetscape of three important streets in Wynwood by making them more pedestrian friendly.

Architecture



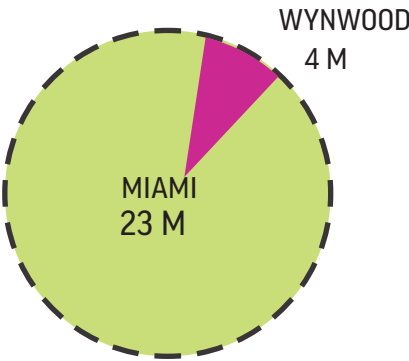
Art and Culture



Water Sports



2019 - MIAMI & WYNWOOD ANNUAL VISITORS REPORT



BUILT HISTORY OF WYNWOOD

Josaih Chaille and Huge Anderson purchased Wyndwood, which was a farmland during this period. They sub-divided the land and sold it.



1917



Farm Land



1926

Coca-Cola opened up a bottling factory at 301 NW 29th Street.

Neighborhood

The American Bakeries Company built a factory to make and distribute Merita Bread at NW 32nd Street in Wynwood.

1928

1977

Wynwood had a population of 18,000 people and 33% were from Puerto Rico.

Factories

Single house

1984



Warehouses



1984

Warehouse

Warehouses

The Fashion District center

1992



Fashion District

2002

Sam Keller introduced Art Basel in Miami Beach.

Street Art

The Wynwood Art District Association was founded

2003



Art District



Goldman bought two dozen warehouses, which become art studios, galleries and restaurants.

2004



2015

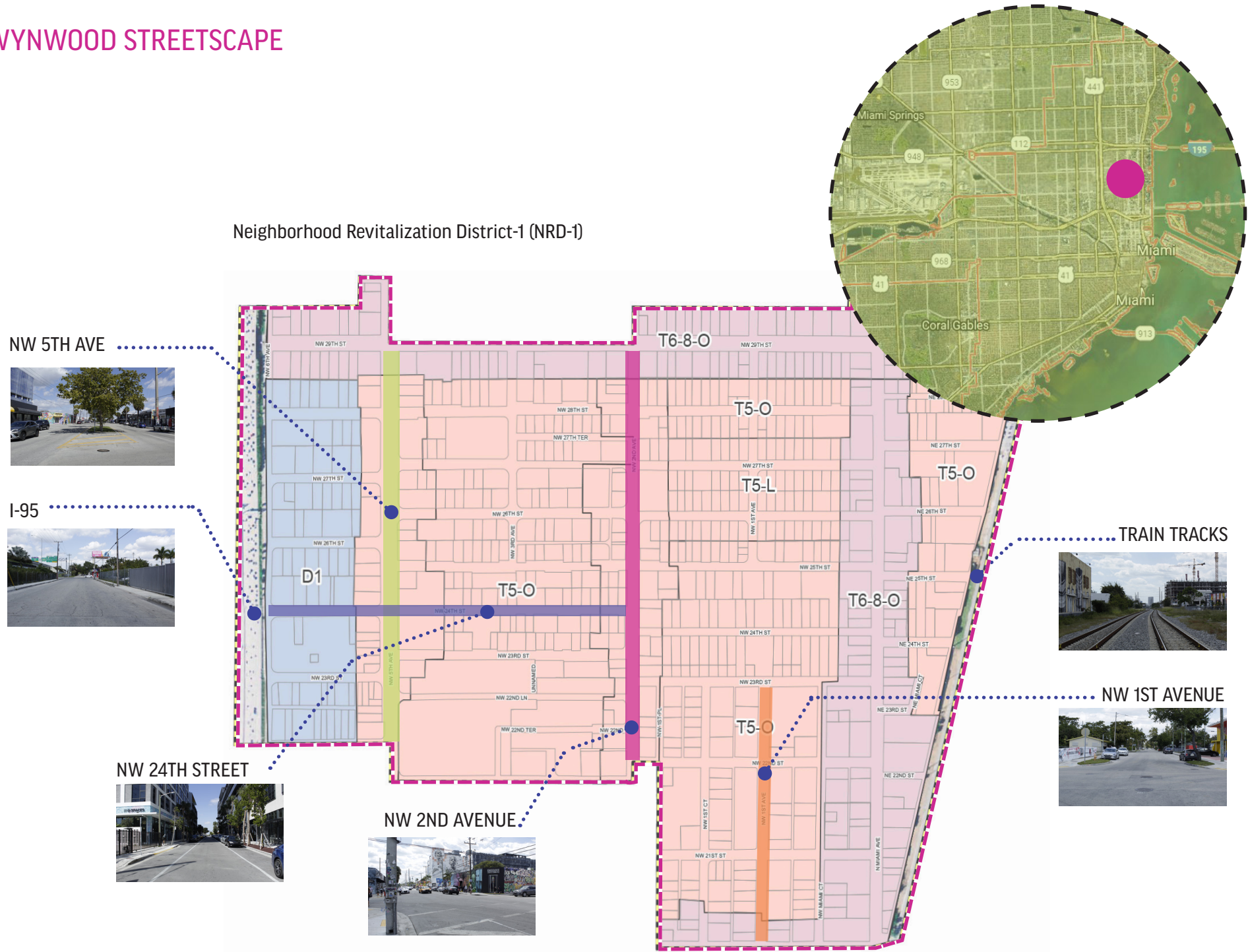
Mixed use buildings like Wynwood 250 started to emerge.

International Destination

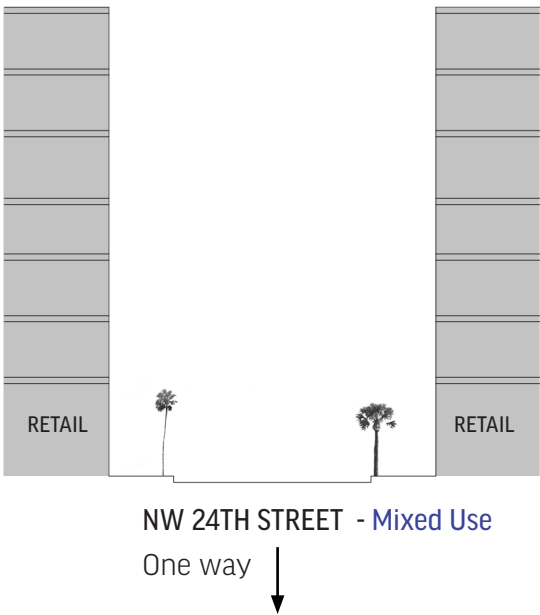
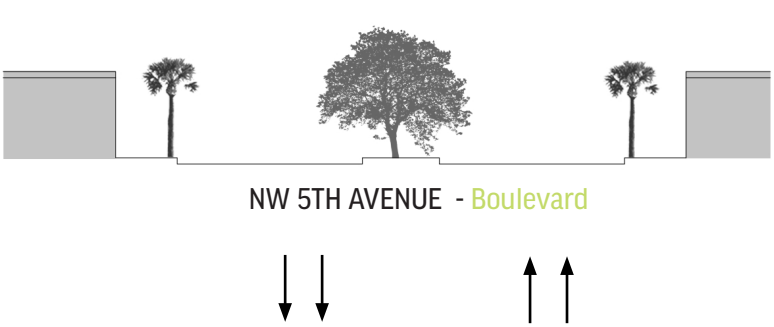
2020



WYNWOOD STREETSCAPE



TYPES OF STREET



NEIGHBORHOOD IDENTITY

ARCHITECTURE

New and existing structures

STREET ART

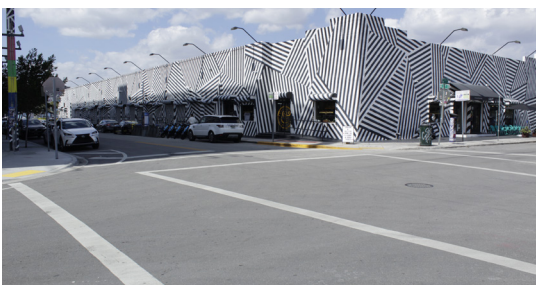
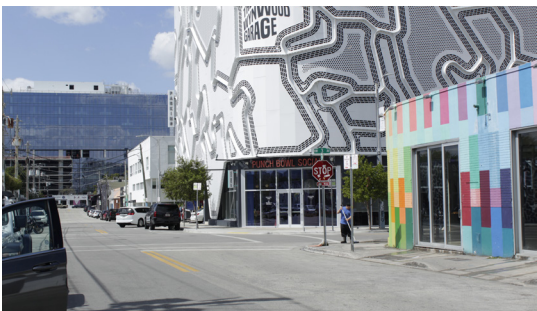
Walls

RESIDENTIAL LIFE

Apartments

COMMERCIAL/RETAIL

Restaurants and shops



002 CASE STUDY

● Boulevard - NW 5TH AVENUE



NW 5TH AVENUE - Boulevard



● Main Street - NW 2ND AVENUE



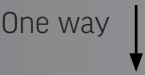
NW 2ND AVENUE - Main Street



● Pedestrian - NW 24TH STREET



NW 24TH STREET - Mixed Use



STREETSCAPE AROUND THE WORLD

“ Streets are means of transport and connections to many places whether we walk, cycle, use public transit or drive but they are also places in their own right, not just passages from one location to another, and they are vital in giving a distinctive character to an area and providing structure for a village, town or city. ”

Petra Funk



Algeciras, Spain



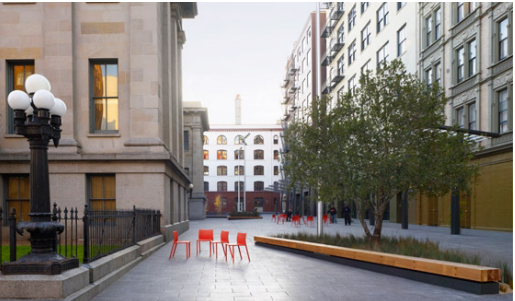
Enschede, The Netherlands



Melbourne, Australia



Barcelona, Spain



San Francisco, USA



Tyrol, Austria



Teruel, Spain

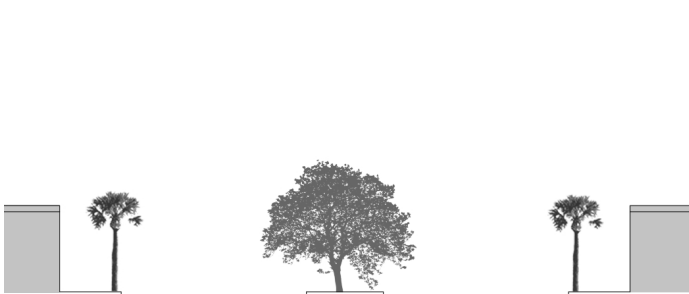


London, UK

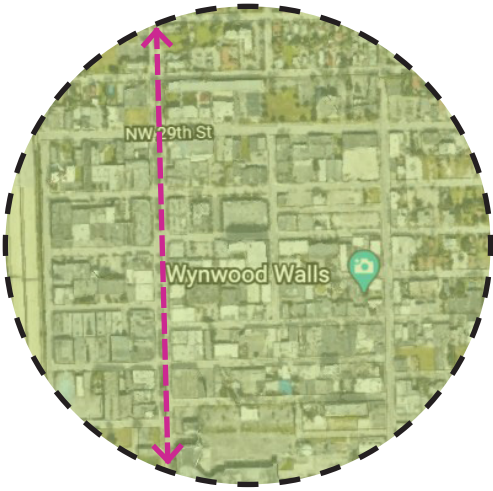


Armentieres, France

NW 5TH AVENUE EXISTING CONDITIONS



NW 5TH AVENUE - Boulevard



STREET DIMENSIONS

- Sidewalk: 10'- 10"
- Travel lanes: 21'
- Parking: 10'-6"
- Median: 12'-6"



OPPORTUNITIES

NW 5TH AVENUE - Boulevard

Flexiable space for community events

Add pavers



One lane street

Add native planting

Shade

Reduce traffic



Bio-swale

Crosswalk reference

Fleixable space for furniture and frontage zone



Add trees

Paved sidewalk

Wider sidewalk

Cables under ground

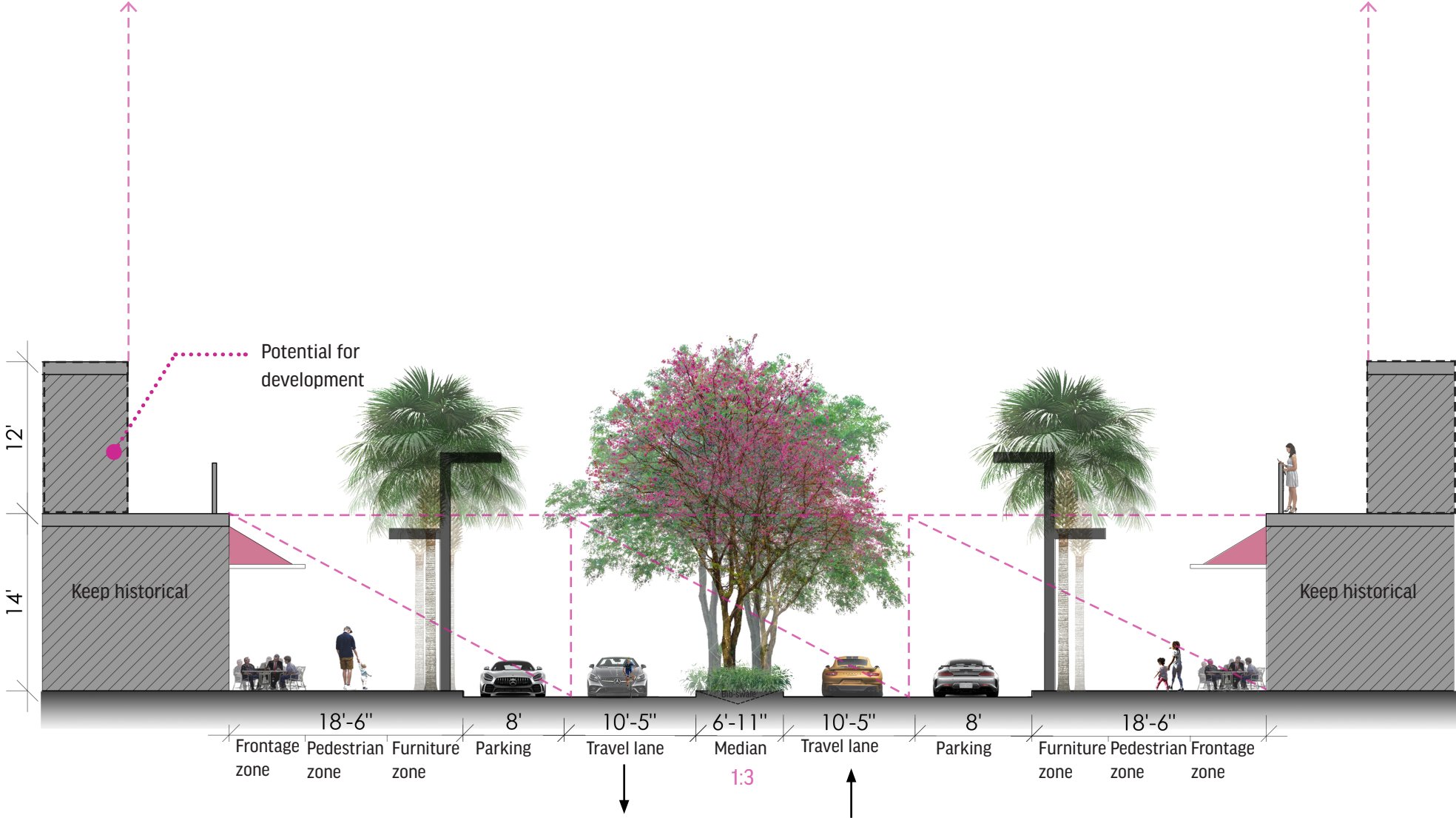
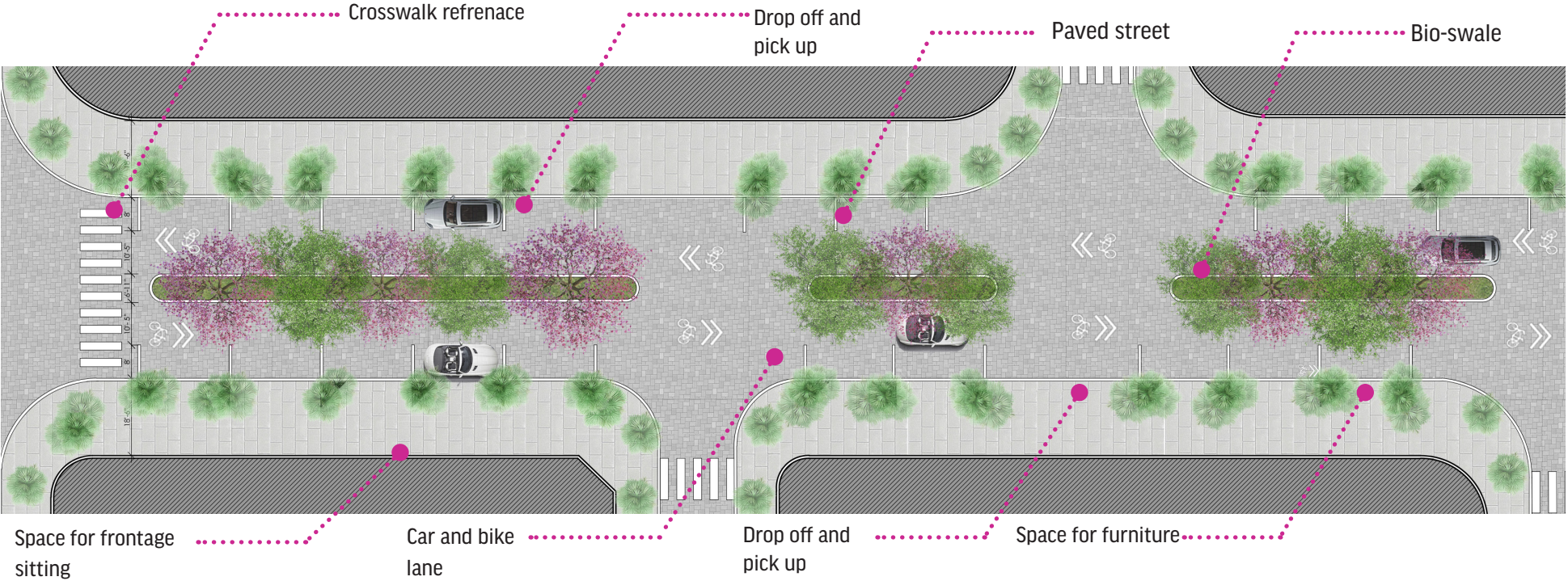
Bike path referances

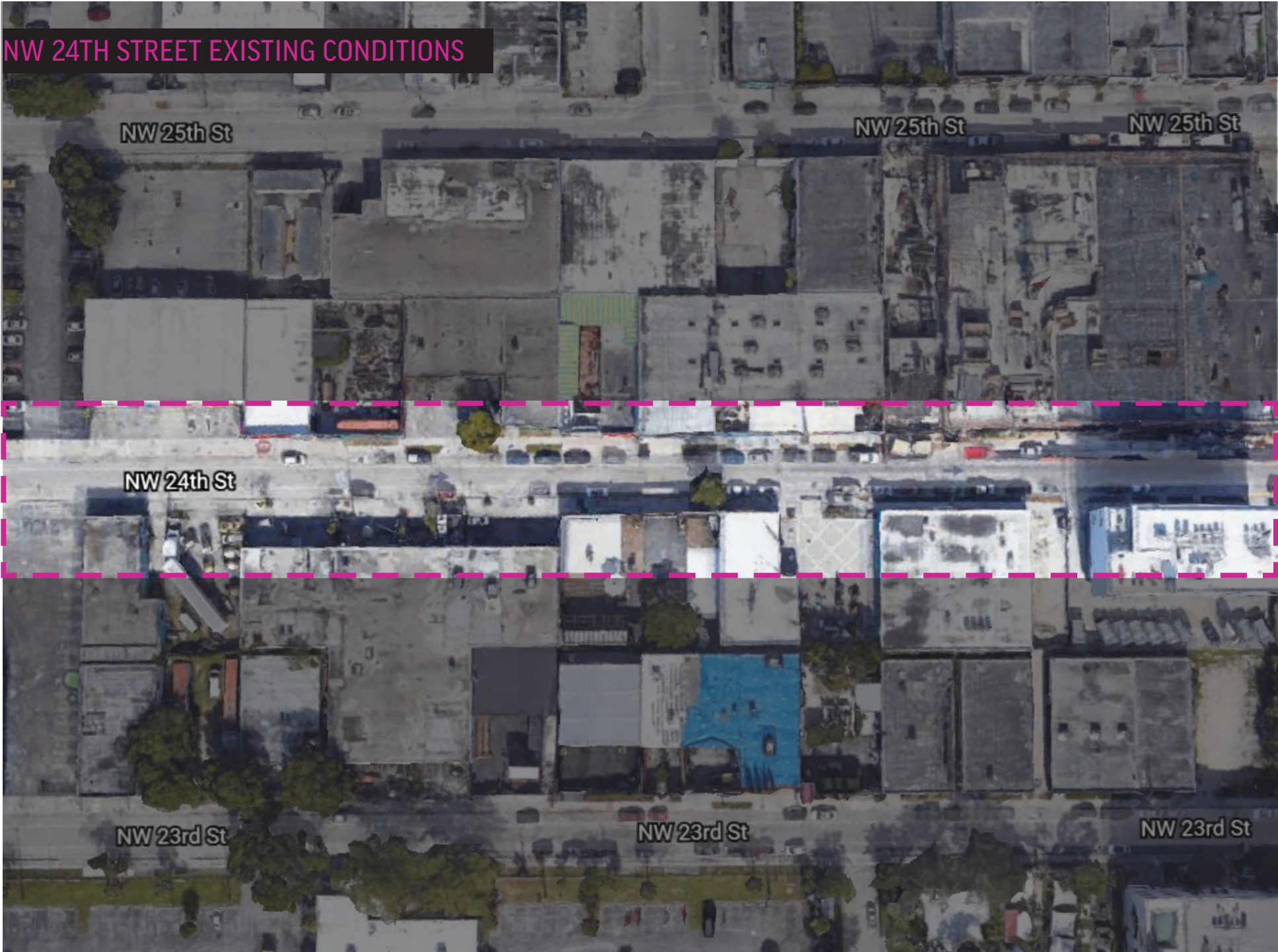


Light post

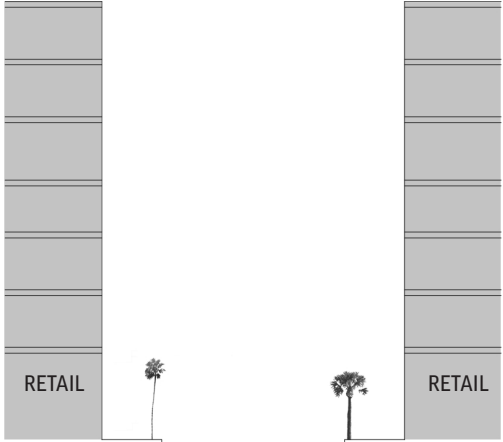
Parallel parking

NW 5TH AVENUE - Boulevard

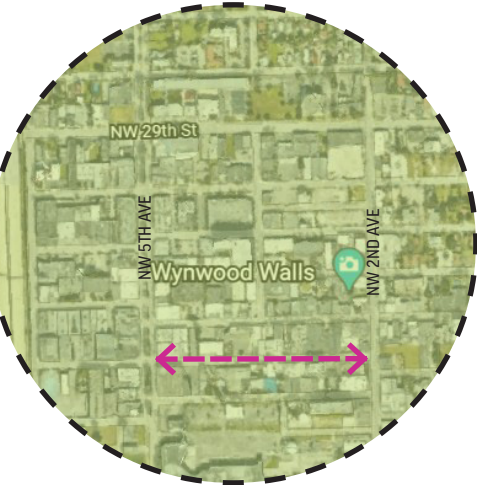




NW 24TH STREET EXISTING CONDITIONS



NW 24TH STREET - Mixed Use
One way



STREET DIMENSIONS

Sidewalk: 10'- 6"
Travel lane: 14'
Parking: 9'



LOCAL PRECEDENT



Lincoln Road



Design District



Giralda Plaza



Española way

OPPORTUNITIES

NW 24TH STREET - Pedestrian

Pedestrian street that connects NW 2ND AVE and NW 5TH AVE.

Street should be paved

No parallel parking

Cables under ground

Flexiable space for retail furniture

Lighting post

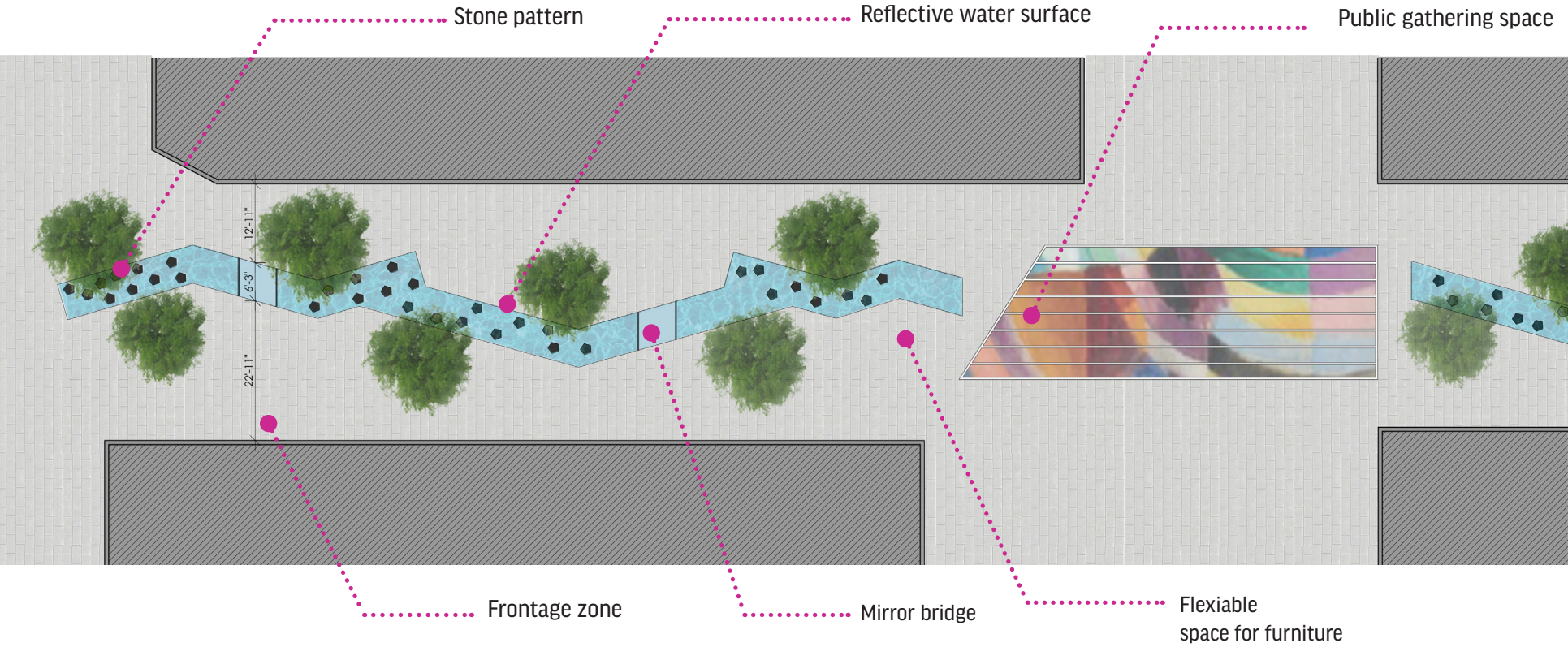
Refelctive water surface

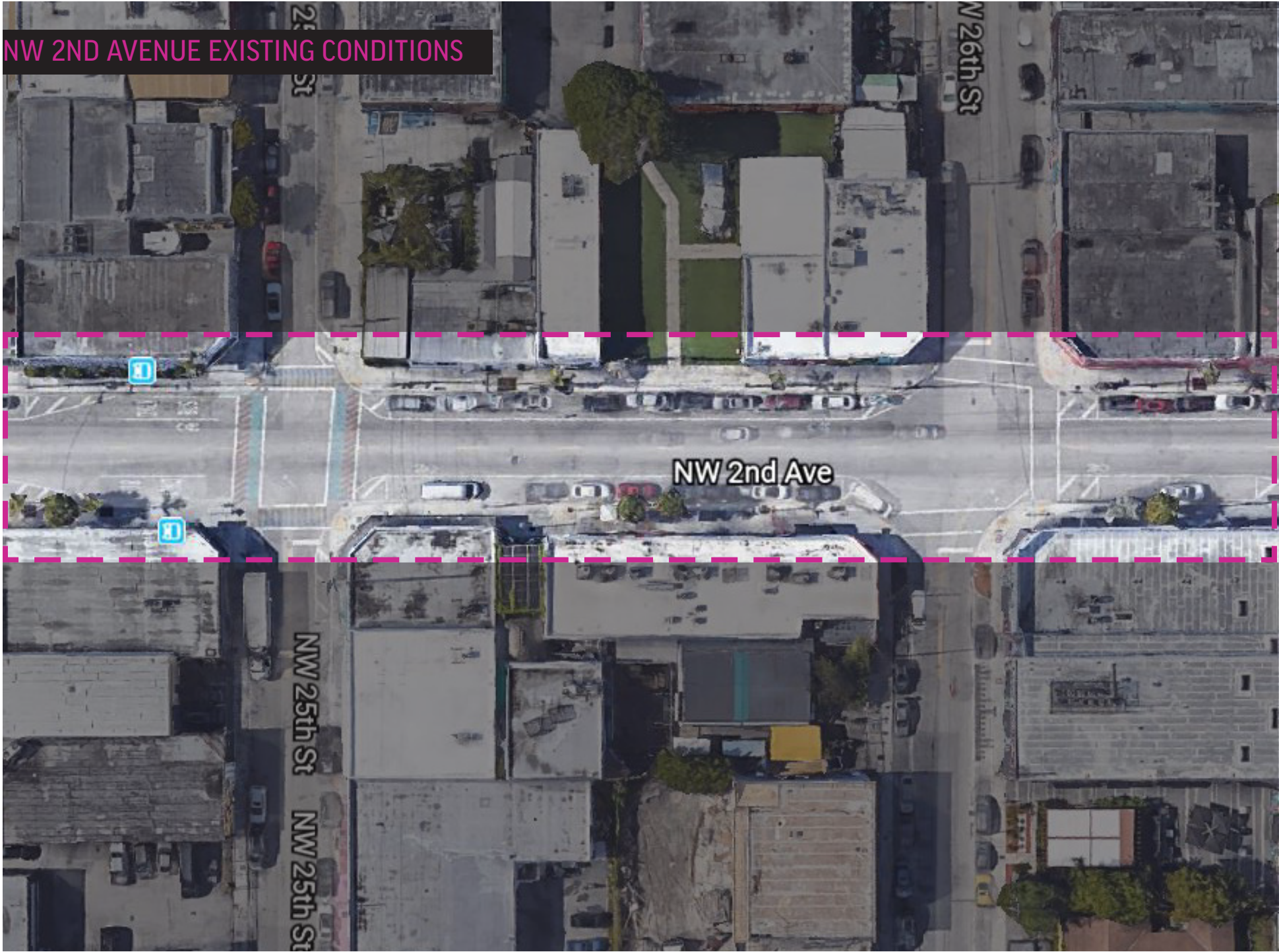
A place to gather for events

Shade



NW 24TH STREET - Pedestrian

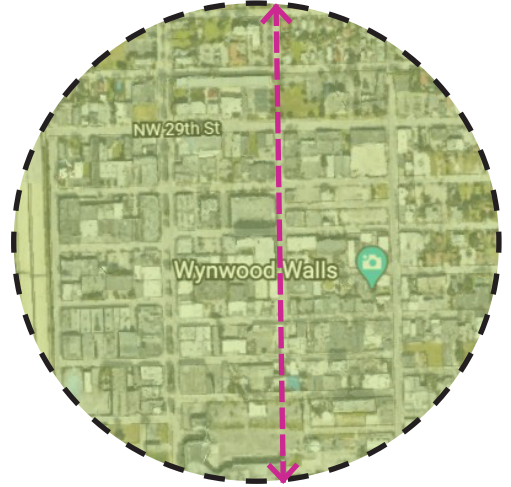




NW 2ND AVENUE EXISTING CONDITIONS



NW 2ND AVENUE - Main Street



STREET DIMENSIONS

Sidewalk: 10'- 10"
 Travel lane: 17'
 Parking: 10' -6'



OPPORTUNITIES

NW 2ND AVENUE - Main Street

Pervious concrete

Better crosswalk
reference



Cables should be
placed underground

Pedestrian crossing
distance should be
shorter

Flexiable
space for
furniture



Wider sidewalk

Lighting post

Crosswalk reference



Bike references

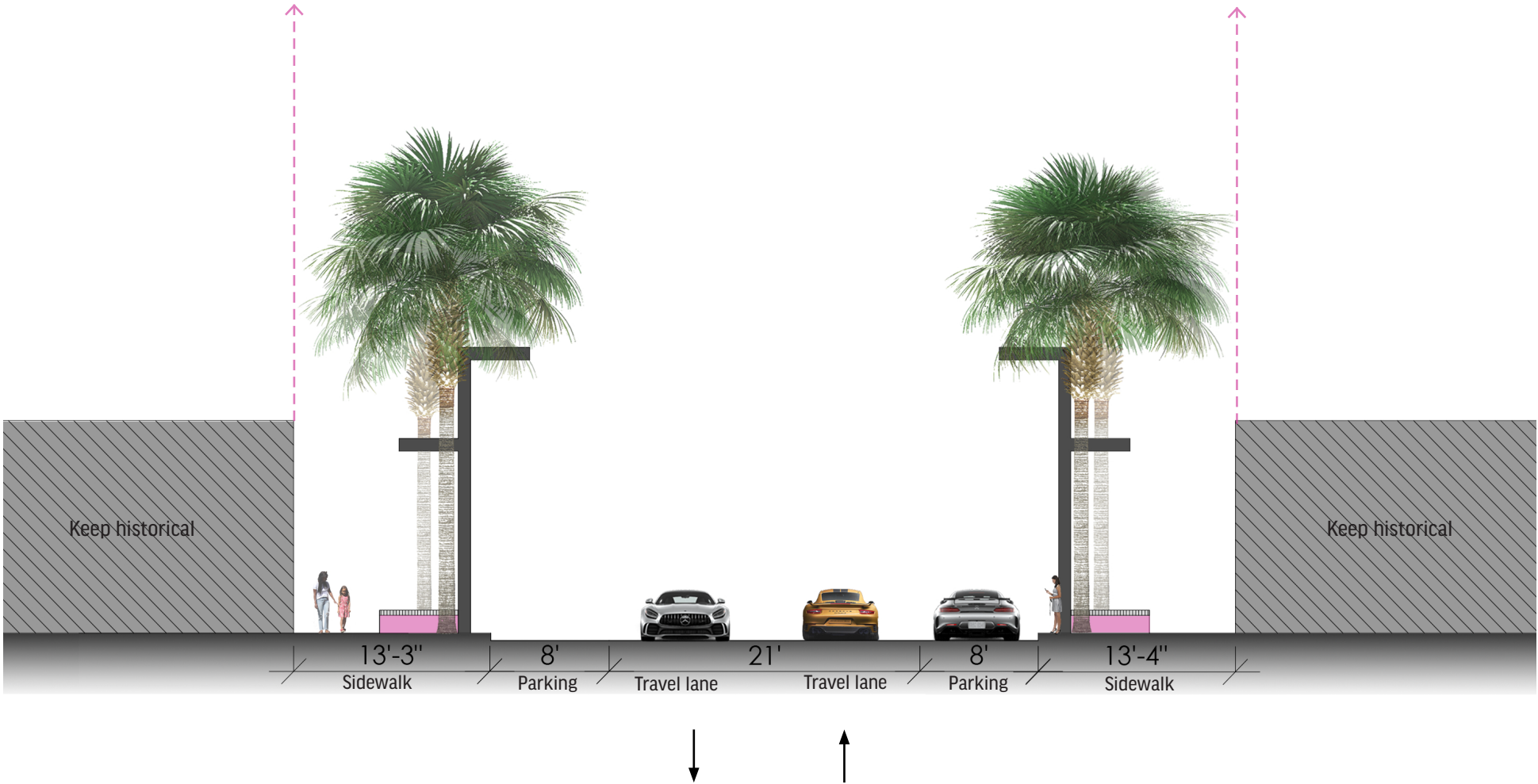
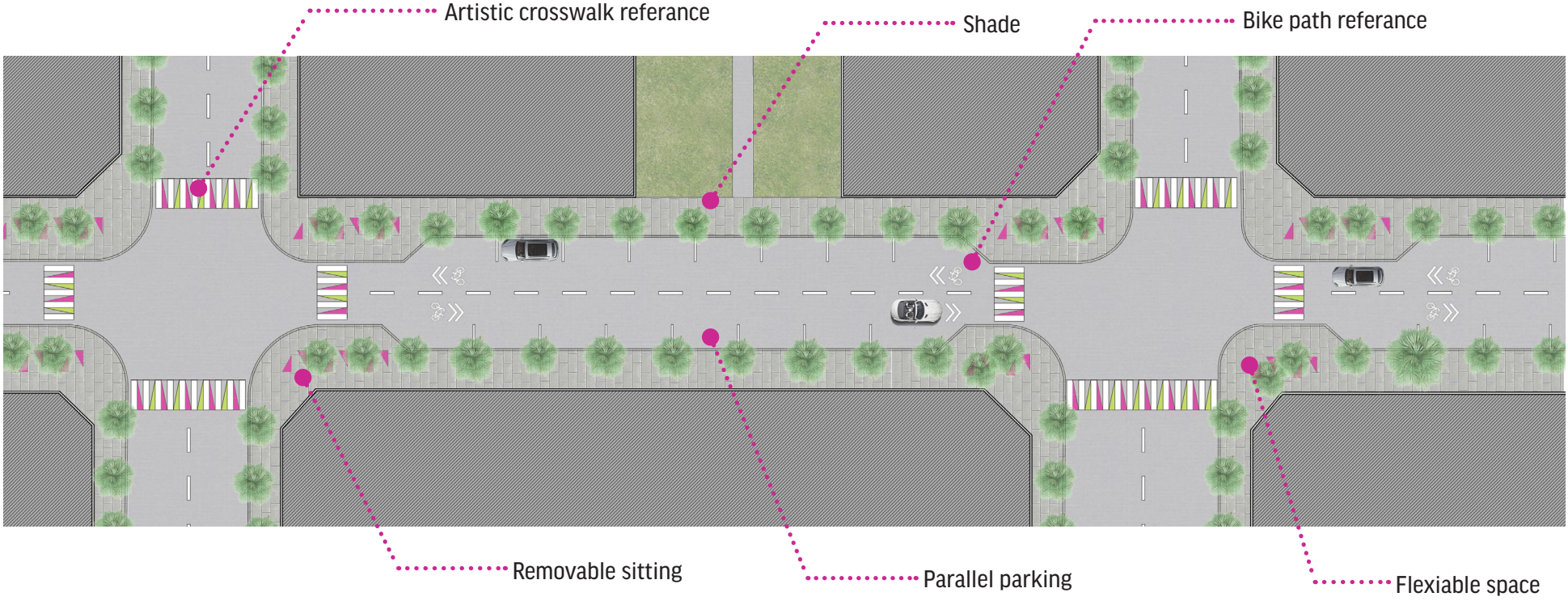
Adjust parallel
parking to make
sidewalk wider



More trees

More shade

NW 2ND AVENUE - Main Street



003 SOLUTIONS

- Sustainable Streetscape
- Street Landscape
- Paving
- Water Conservation
- Security and Safety



SUSTAINABLE STREETSCAPE

Sustainable streetscape ensures that streets are durable and function as a better ecosystem while generating systems that manage storm water runoff and at the same time reduce carbon footprint. Sustainable streetscape also adds aesthetic value, economy growth, environmental health and safety to a neighborhood. For this reason, sustainable streetscape creates an eco-friendly environment to live, visit and work. Locals and tourist would enjoy having an outdoor lunch, a pleasant walkable sidewalk, a bicycle path and a safe place to connect other places.

There are three elements that play an important role in a sustainable streetscape design which are lighting, permeable pavement and bio- swales. For instance, solar power lighting can reduce light pollution and could benefit a city's economy by reducing the total power consumption. Permeable pavement decreases the flow of surface runoff water into a sewer system, which makes water penetrate the sub-grade and keep plants in healthy conditions. As permeable pavement, bio-swales are practical in retaining water. They help filter water into the ground which keeps soils in good conditions and improves the growth development of plants.



STREET LANDSCAPE

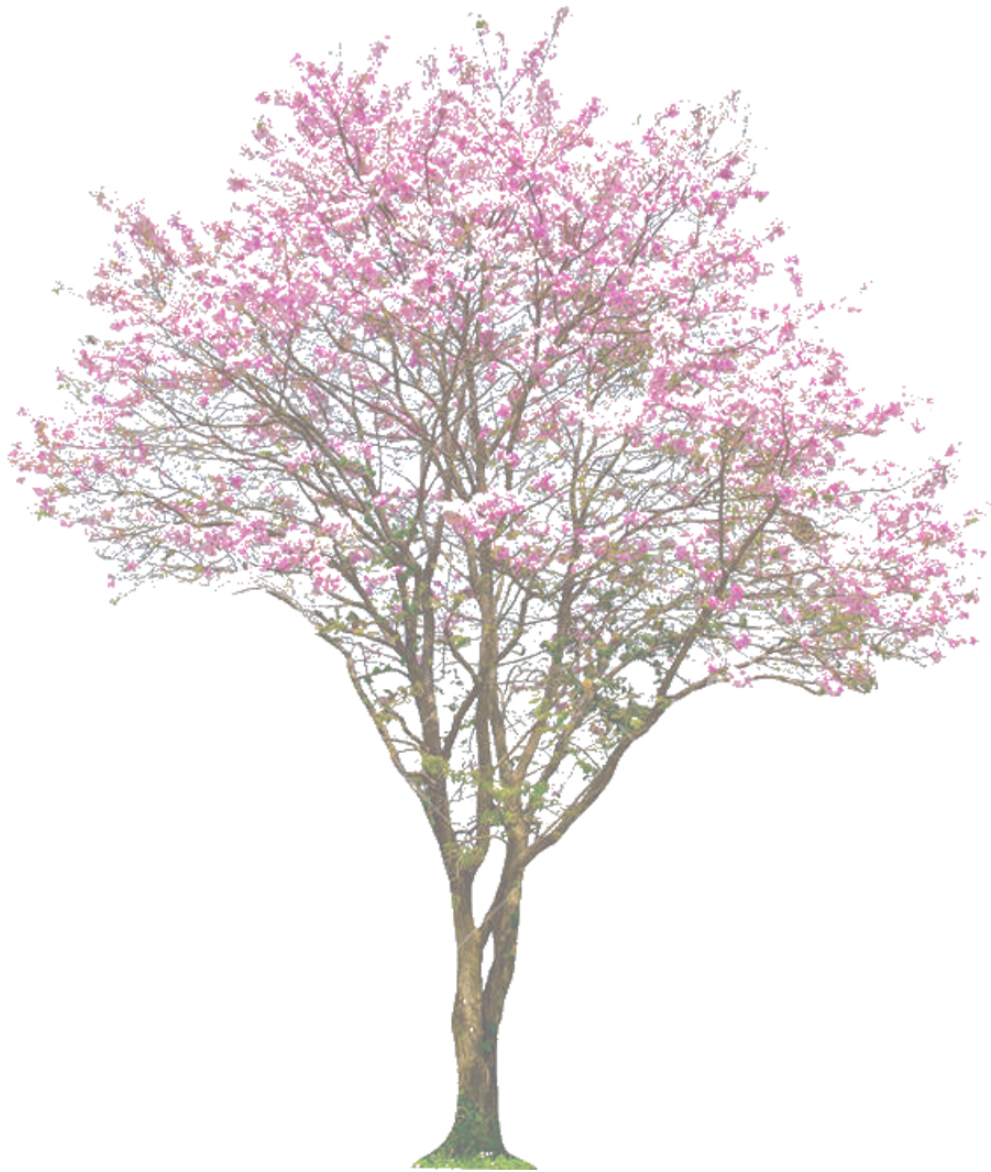
Street landscape planting can improve the character of a neighborhood. They provide a friendly environment for drivers and pedestrians. Pedestrians benefit from the shade and shelter that street trees provide. Street trees also adds visual interest and makes sidewalk hard surfaces more pleasant for pedestrians. Unlike rural sites, planting trees in an urban sites could be more challenging because of hardscape surfaces, poor soils, excessive heat, poor water quality and air pollution.

To conserve street landscaping in places as Wynwood, the urban site conditions should include:

- Protecting the roots of the vegetation from being compacted or not retaining water.
- Providing sufficient and adequate space for above and below ground landscape. This helps trees to grow in healthy conditions.

Street landscape that are planted and placed properly in an urban site as Wynwood can:

- Softens the hardscape surface of a sidewalk
- Reduces the local island heat effect
- Improves air quality
- Provides shade
- Improves the visual aspect of streets



BIODIVERSITY

Miami-Dade Landscape Manuel



Eugenia oetida



Caesalpinia granadillo



Pimenta dioica



Coccoloba diversifolia



Sebal Palm



Acer rubrum



Cassia Grandis



Cassia Javianca

SHRUBS



Southern Shield Fern



Wood Fern



Hymenocallis Latifolia



Society Garlic

PAVING

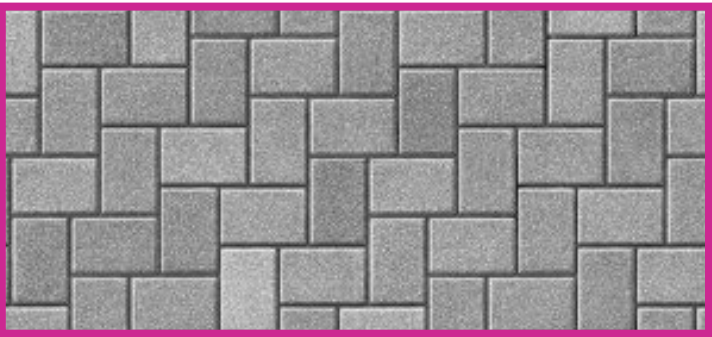
Permeable pavements can be easily installed and maintained. They are also known for being a long-lasting method of paving. They have a positive effect on vegetation because they function as filters. Through the process of infiltrating surface water to the subgrade, the water can be cleaned.

ADVANTAGES OF PAVEMENT:

- Can cool paving surfaces through evaporation
- Reduces tire noise and traffic speed
- Increases traction during rain as standing surface water is absorbed
- Reduces storm water runoff
- Provides aesthetic appeal

TYPES OF PERMEABLE PAVEMENT

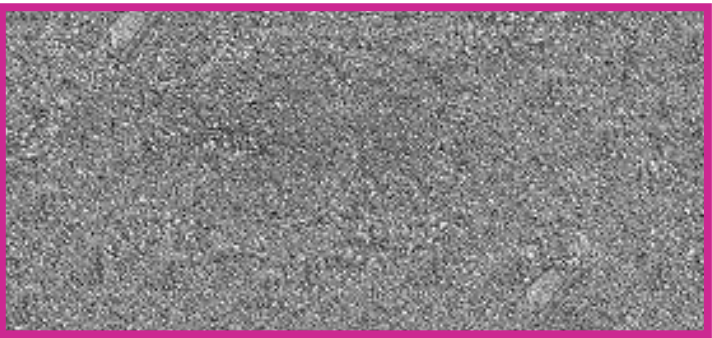
Pervious concrete	3 to \$4/square foot
PICP pavement	3 to \$4/square foot
Porous asphalt	\$2/square foot



Permeable interlocking pavers



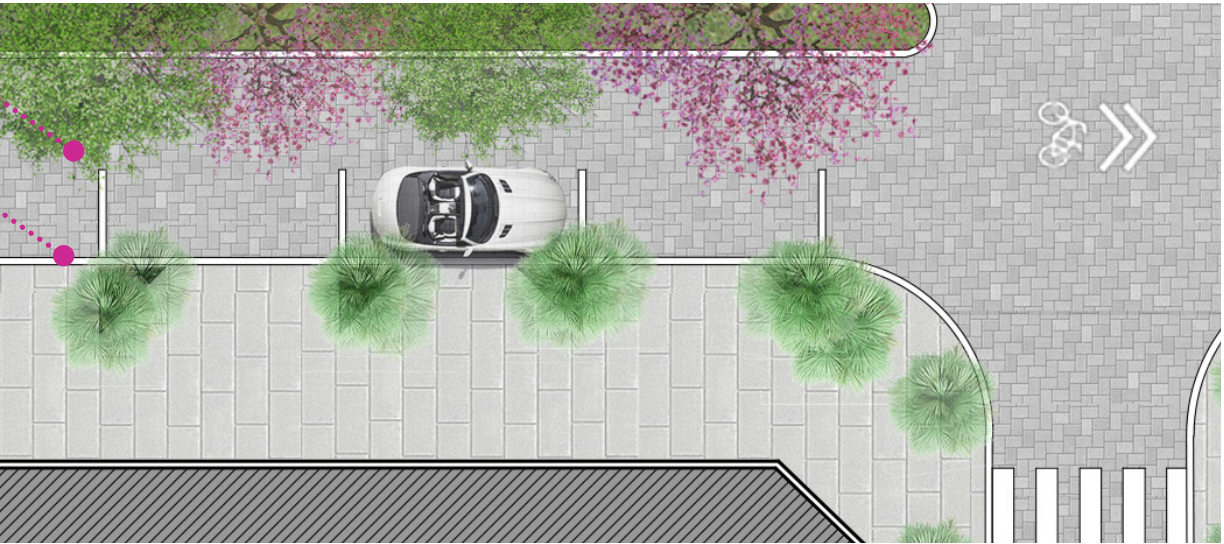
Permeable concrete



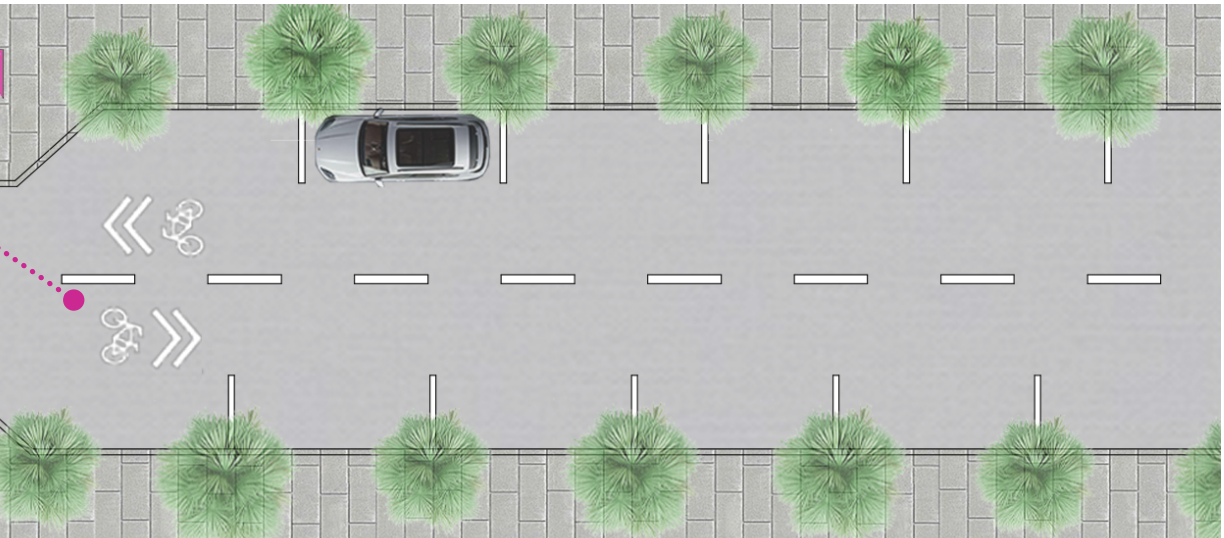
Permeable asphalt

Permeable interlocking pavers

Permeable concrete



Permeable asphalt



WATER CONSERVATION

Storm water management practice can be done through a bio-swale system. As pervious paving, bio-swales obsorb water. Storm water runoff occurs when water flows rapidly over a surface that does not absorb water. This affects the environment because these storm water runoffs are contaminated. Therefore, they can also contaminate rivers, streams and vegetation. Bio-swales reduce water velocity and contribute in the process of filtering storm water runoffs.

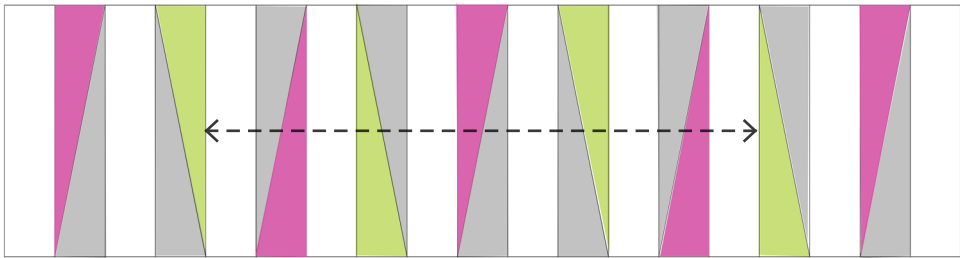
According to a research done by the Michigan State University these are some of the benefits of a bio-swale system:

- Protects local waterways from stormwater pollutants
- Creates habitat for wildlife, including birds and butterflies
- Reduces non-point pollution by filtering stormwater
- Reduces standing water (puddles) that can attract mosquitoes
- Creates colorful gardens with a variety of flowers and plants year round
- Requires little maintenance after establishment

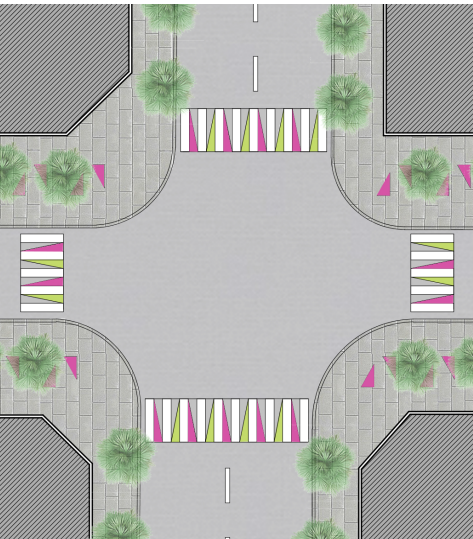
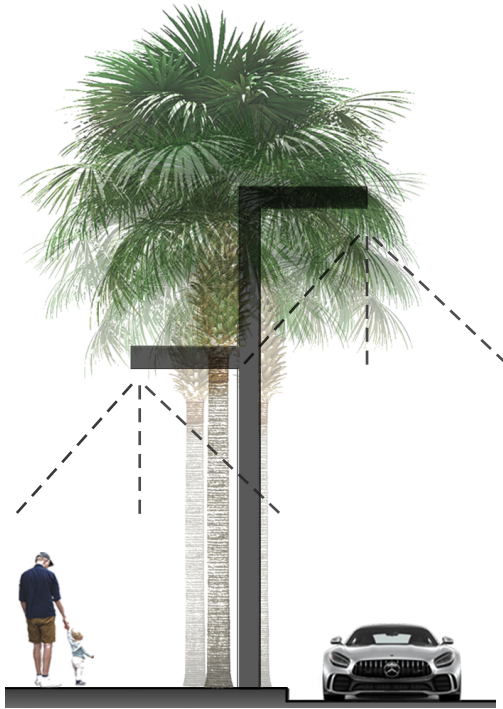


SECURITY AND SAFETY

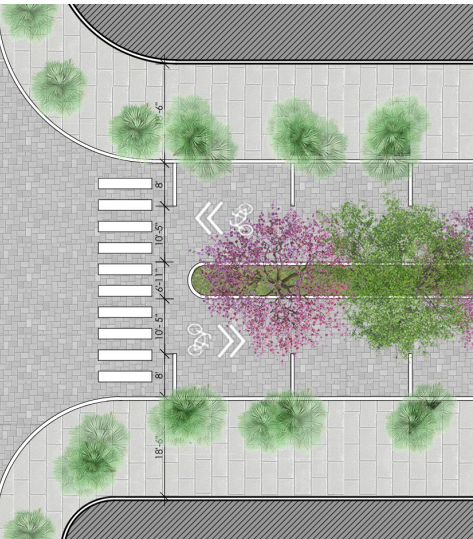
Better **cosswalk definition** makes pedestrian feel secure when crossing.



Lighting provides a comfortable and secure space and encourages outdoor activities. Outdoor lighting also highlights important architectural structures and building facades which adds value to the character of a neighborhood.



NW 2ND AVENUE



NW 5TH AVENUE



NW 5TH AVENUE

004 NEXT STEPS

Implementing artistic street elements such as:

Wayfinding and Signage

Benches

Bicycle Racks

Bollards

Litter Bins



WORKS CITED

Bain, Lesley, Barbara Gray, and Dave Rodgers. Living Streets: Strategies for Crafting Public Space. Hoboken, NJ: John Wiley & Sons, 2012.

Calkins, Meg, and Michael Van Valkenburgh. The Sustainable Sites Handbook a Complete Guide to the Principles, Strategies, and Practices for Sustainable Landscapes. Hoboken (N.J.): Wiley, 2012.

Firley, Eric, and Katharina Groen. The Urban Masterplanning Handbook. Somerset: Wiley, 2014.

Funk, Petra, Chen Zhang, and Wenwen Yin. Cheng Shi Jie Dao Jing Guan She Ji = Urban Streetscape Design. Shenyang: Liaoning ke xue ji shu chu ban she, 2014.

Gibb, Terry. "Bioswales Can Improve Water Quality Resources." MSU Extension, September 20, 2018. https://www.canr.msu.edu/news/bioswales_can_improve_water_quality_resources.

Street Art World. London: Reaktion Books, 2016

THANK YOU